

# The Ramsey Gateway Project - Highway 10 Public Virtual Open House

Thursday February 18, 2021

The Meeting will begin in:

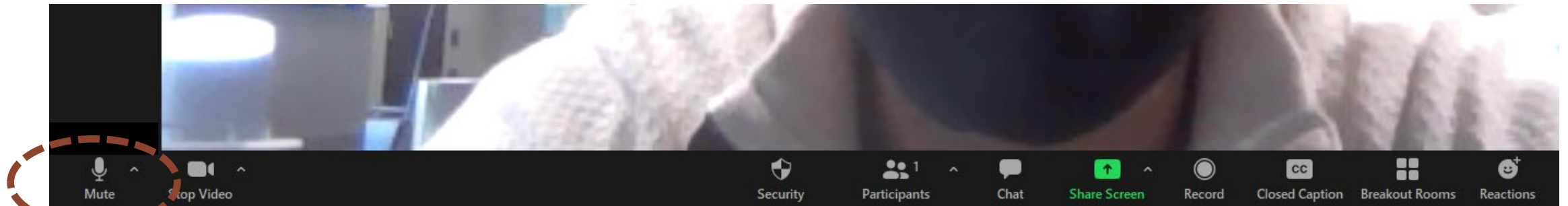


Anoka County  
MINNESOTA



# How to virtually participate today

1. Please “mute” yourself when not talking
2. Expect a 45-minute presentation
3. Questions and comments will be addresses in group discussion following the presentation



Click here for  
mute

# Agenda

- 1. Project Overview**
- 2. Project History**
- 3. Project Schedule**
- 4. Environmental Assessment Reevaluation Alternates**
- 5. Next Steps**
- 6. Group Discussion**

# Environmental Assessment Reevaluation

## part of National Environmental Policy Act (NEPA)

- A federal Environmental Assessment (EA) was completed in 2009
- Project is using federal funds – requires we follow federal regulations
- We are now doing a reevaluation of the EA which includes:
  - An existing preferred alternate
  - Reevaluation of the preferred alternate
  - Refined alternate for reevaluation
- **We are looking for public comment on 2009 preferred alternate and 2021 refined alternate and any items of concern**
- The public comment period will be open from February 18 – March 5

# Project Development Process

- Project justification
- Concepts
- Evaluation

- Vision refinement
- Preliminary design
- Funding

**WE ARE HERE**

**Planning**  
& Environmental  
Assessment (EA)

**Preliminary  
Design**  
& EA Reevaluation

**Final Design &  
Right of Way**

**Construction**

Identify locally  
preferred concept

Define **WHAT** to build

Define **HOW** to build

Build

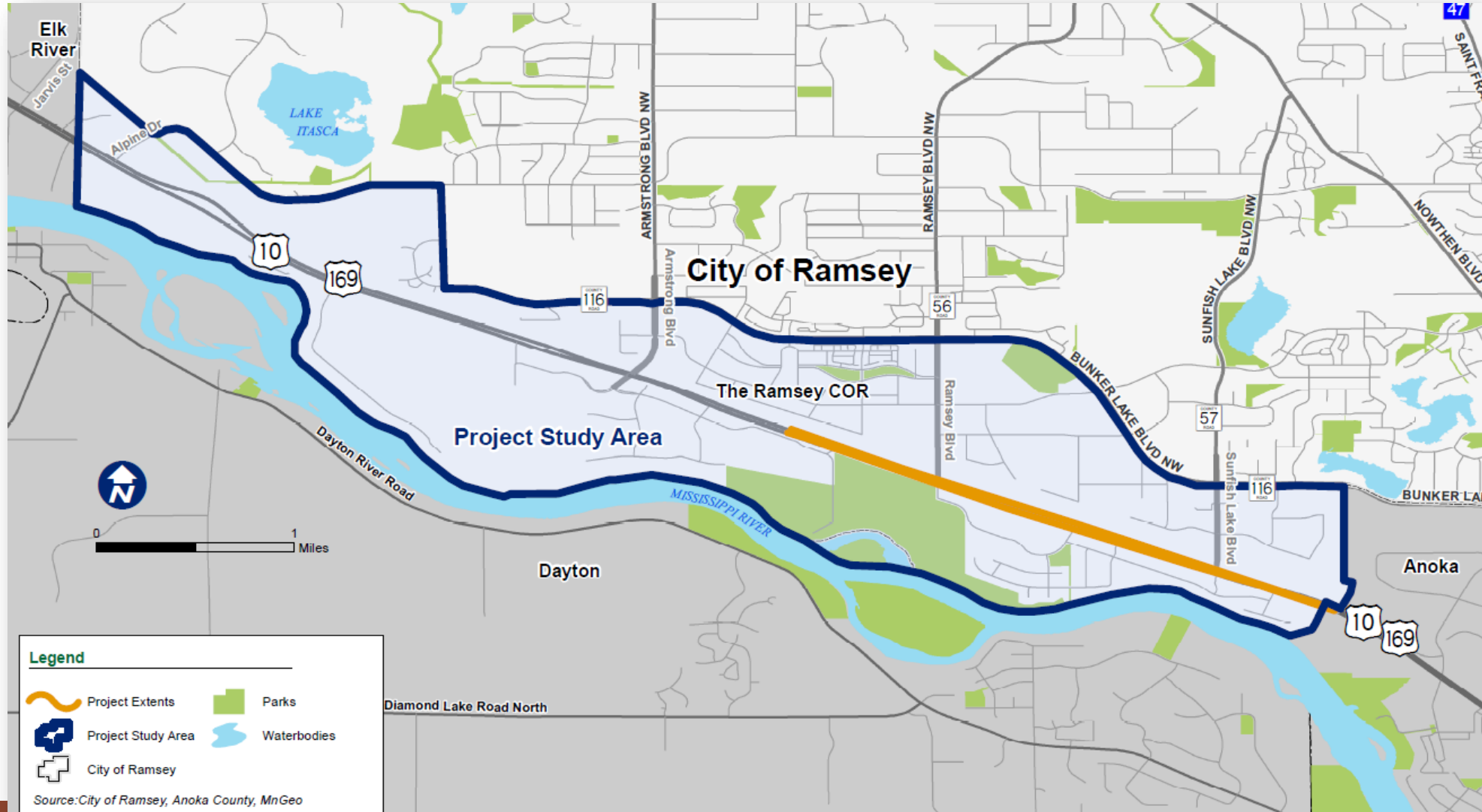
2009-2019

2020-2021

2021-2022

2023

# Project Area



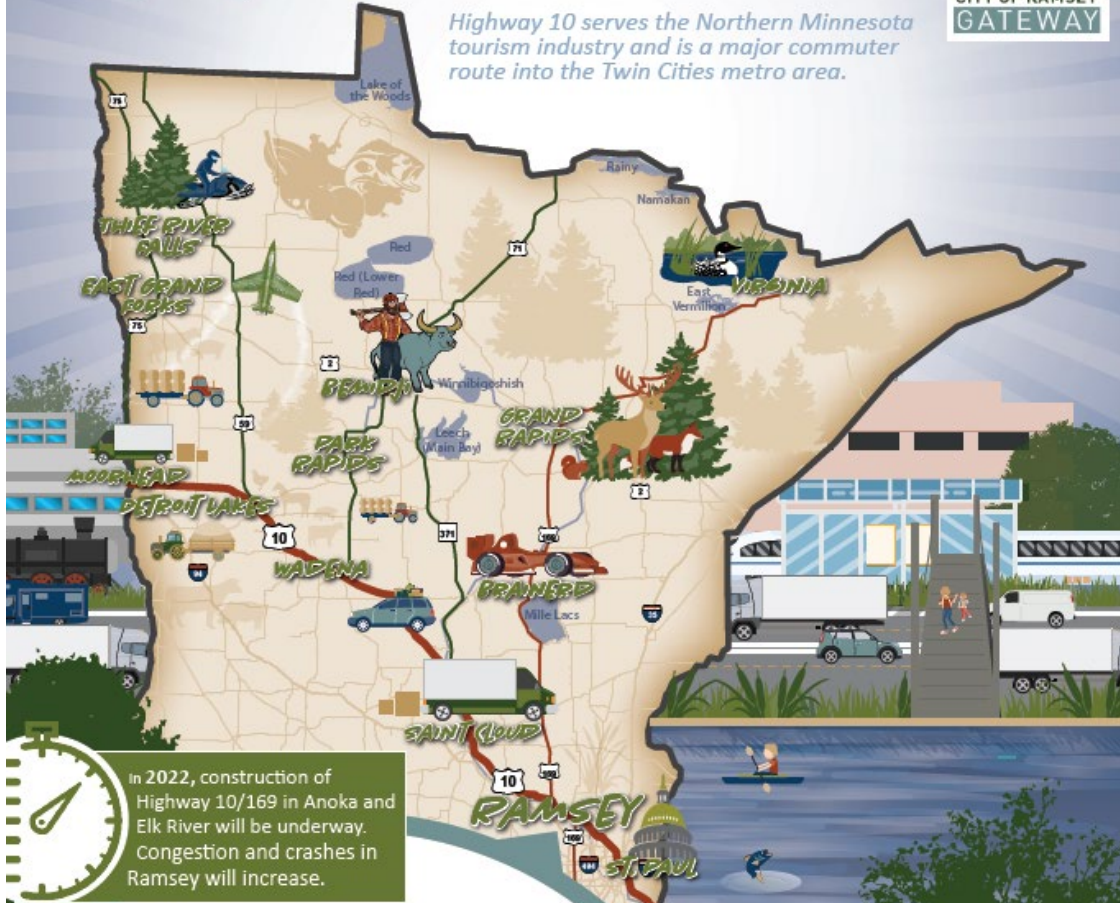


# PROJECT OVERVIEW

# Highway 10/169 THE GREATER MINNESOTA GATEWAY

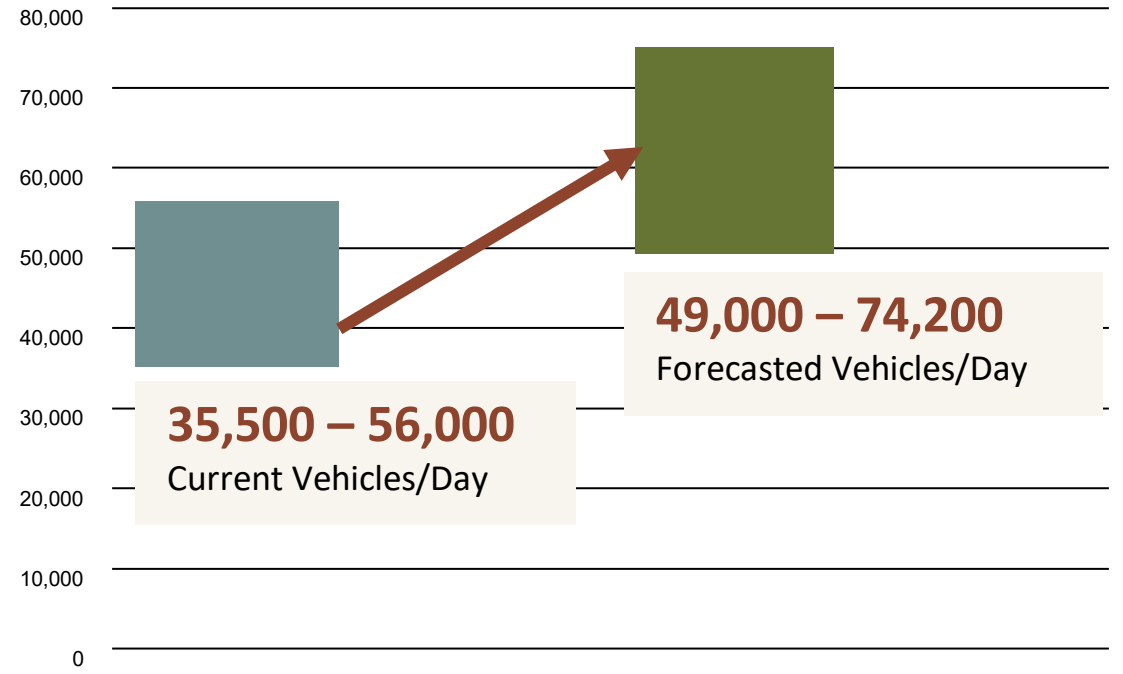


Highway 10 serves the Northern Minnesota tourism industry and is a major commuter route into the Twin Cities metro area.



# Project Purpose

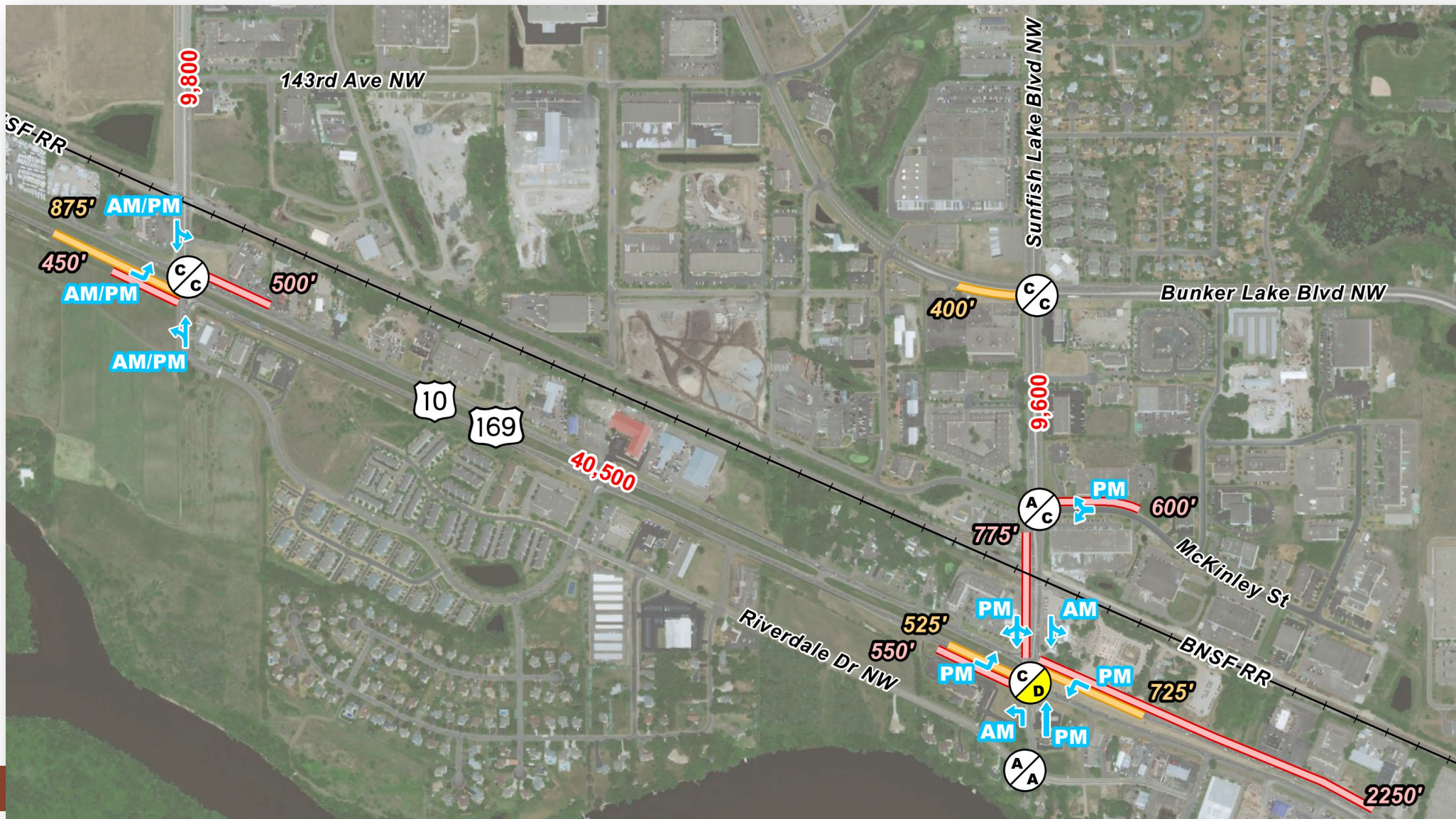
To address capacity and operation issues, improve safety, and maintain the functionality of Highway 10 as an important route in the Statewide Transportation System.



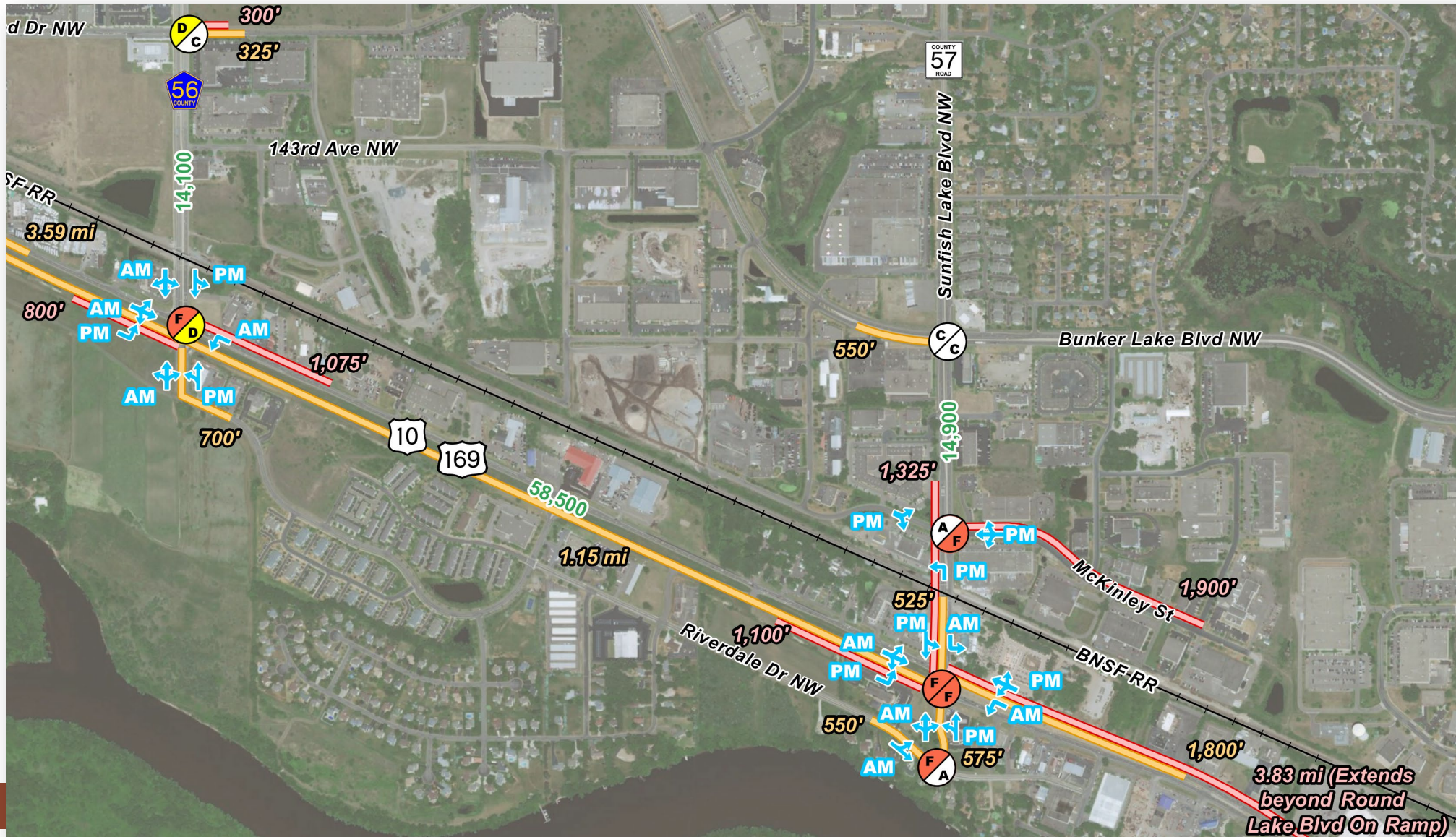
**48-53%** AM/PM through trips



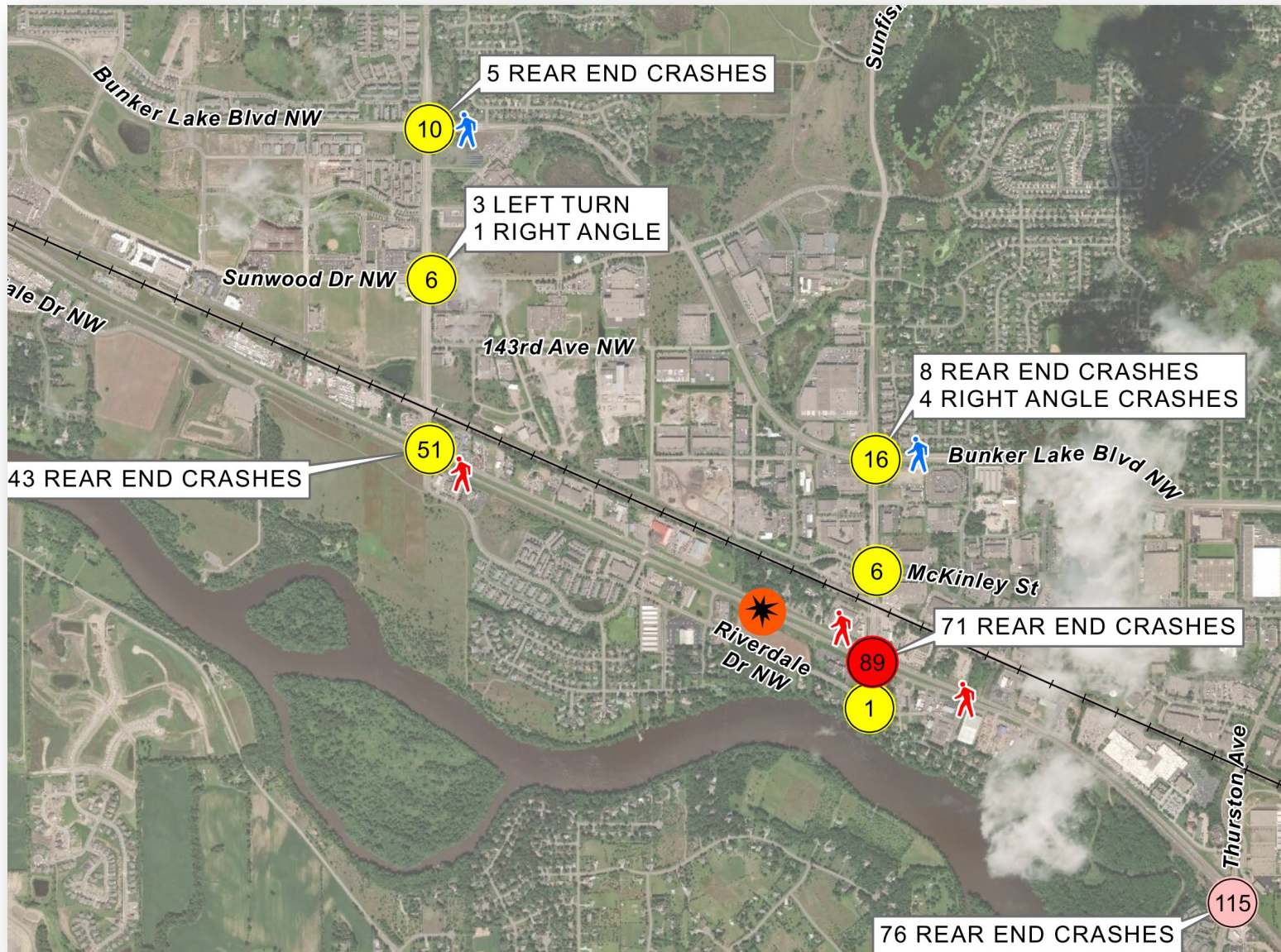
# Project Need – Mobility: Capacity and Operations (Today)




# Project Need – Mobility: Capacity and Operations (2045)



# Project Need – Safety




## High number of crashes


 55 crashes per year (2013-2017)

 60% rear end

 Sunfish Lake Blvd and Ramsey Blvd above normal crash range

 4 fatal crashes in 10 yrs – 3 involved a pedestrian fatality

## Numerous access points

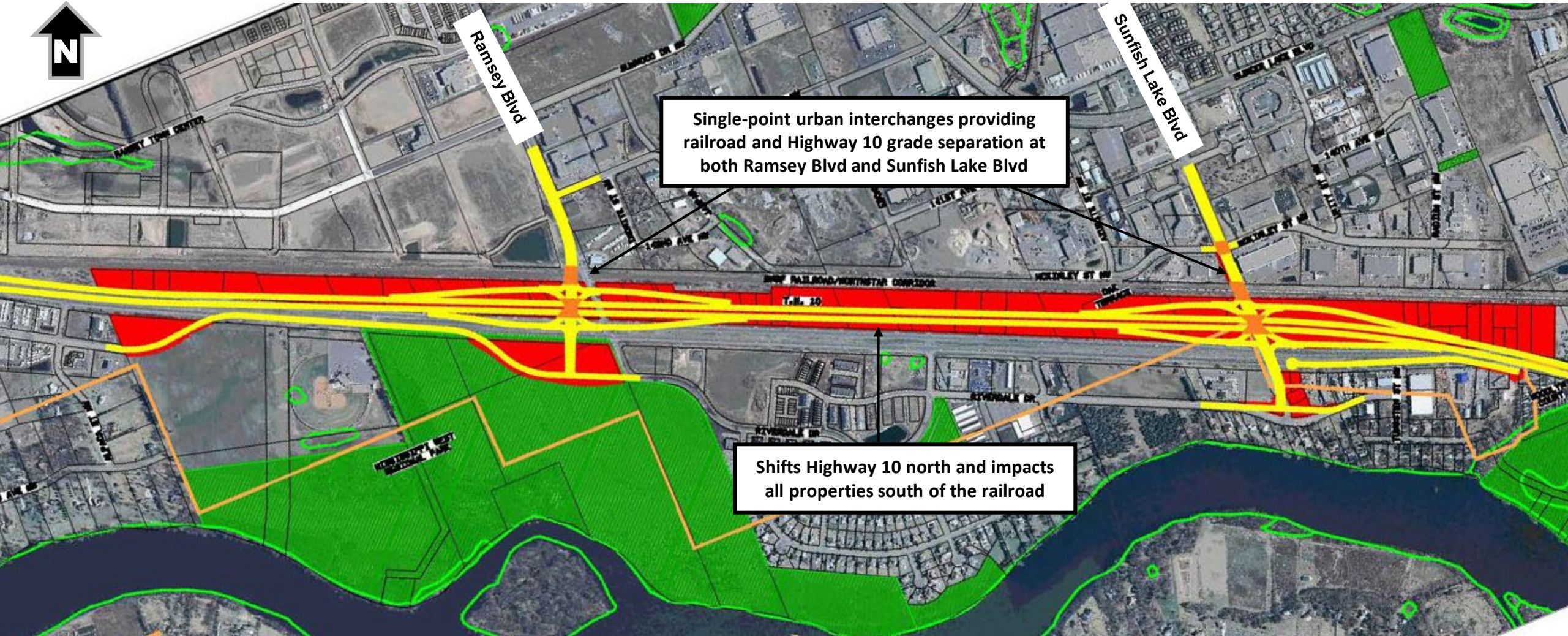
 51 access points contribute to mobility and safety issues

An aerial photograph of a highway interchange, likely I-70/I-25 in Denver, Colorado. The image shows the highway lanes, overpasses, and surrounding urban and industrial areas. Green landscape overlays are applied to the image, highlighting planned green spaces, trees, and landscaping around the interchange and along the highway corridors. The text 'From 2009 to Today' is overlaid on the lower-left portion of the image.

From 2009 to Today

# PROJECT HISTORY

# 2009 Existing Preferred Alternate



# 2009 Existing Preferred Alternate





## Flaws:

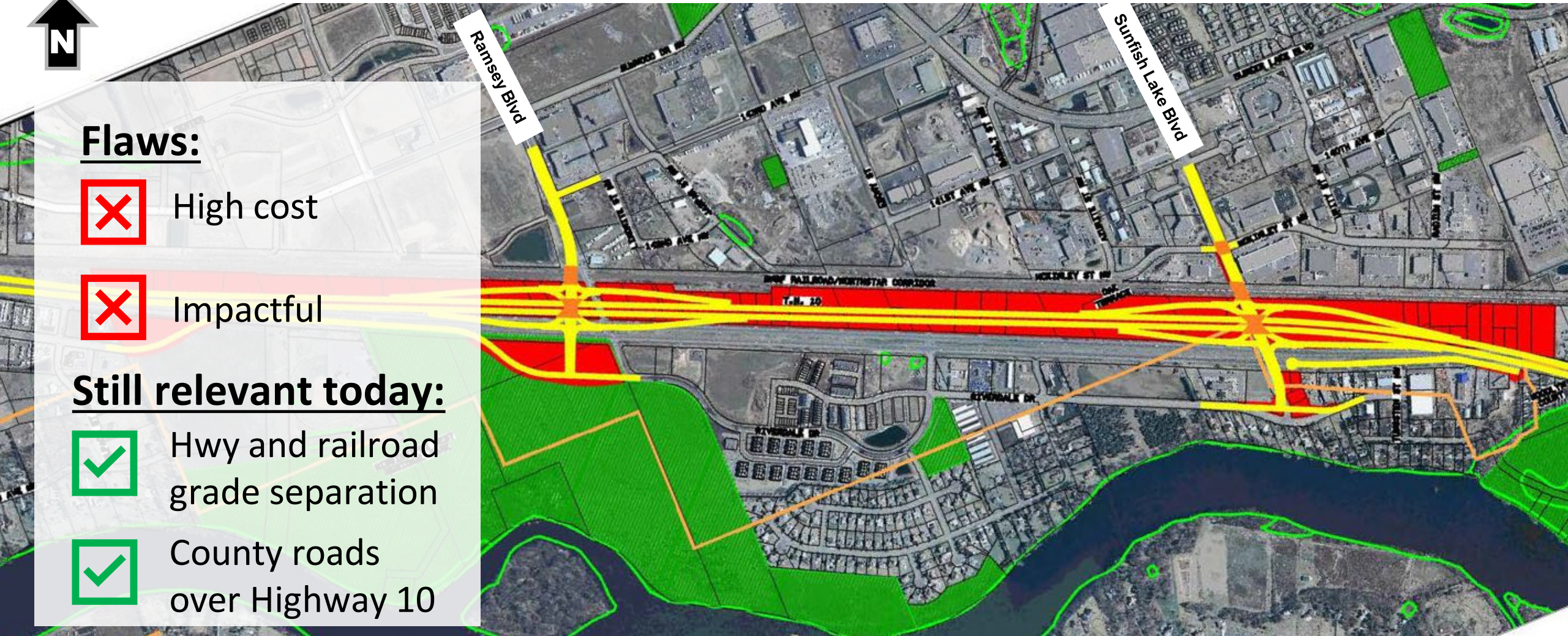
 High cost

 Impactful

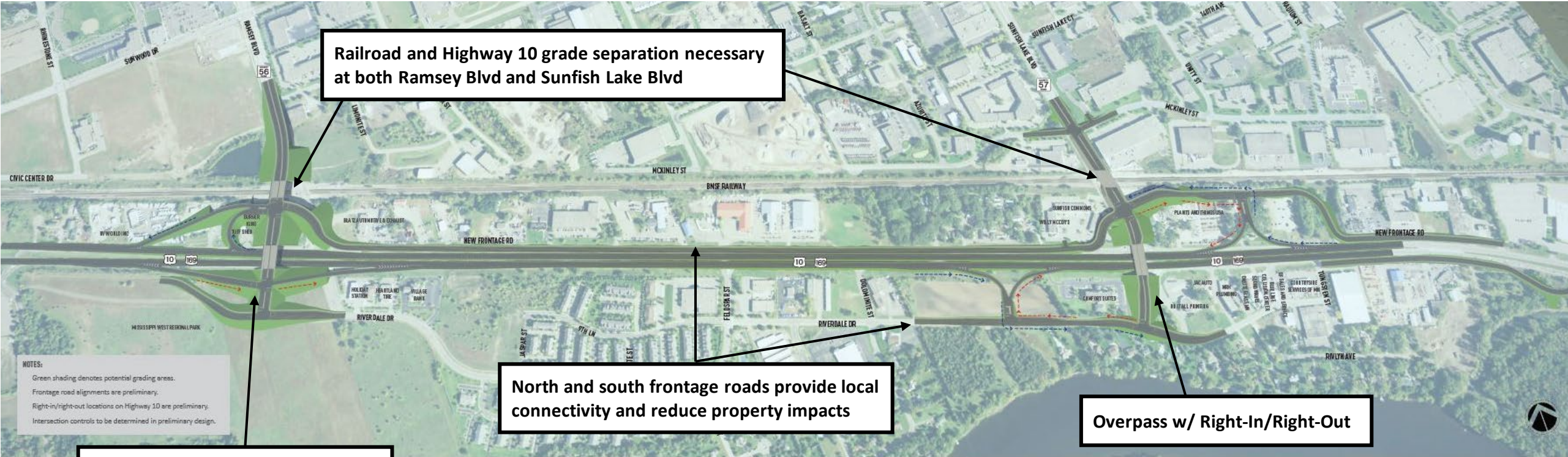
## Still relevant today:

 Hwy and railroad grade separation

 County roads over Highway 10



# 2019 Study Vision



Railroad and Highway 10 grade separation necessary at both Ramsey Blvd and Sunfish Lake Blvd

North and south frontage roads provide local connectivity and reduce property impacts



Overpass w/ Right-In/Right-Out

Folded Tight Diamond Interchange



NOTES:  
Green shading denotes potential grading areas.  
Frontage road alignments are preliminary.  
Right-in/right-out locations on Highway 10 are preliminary.  
Intersection controls to be determined in preliminary design.

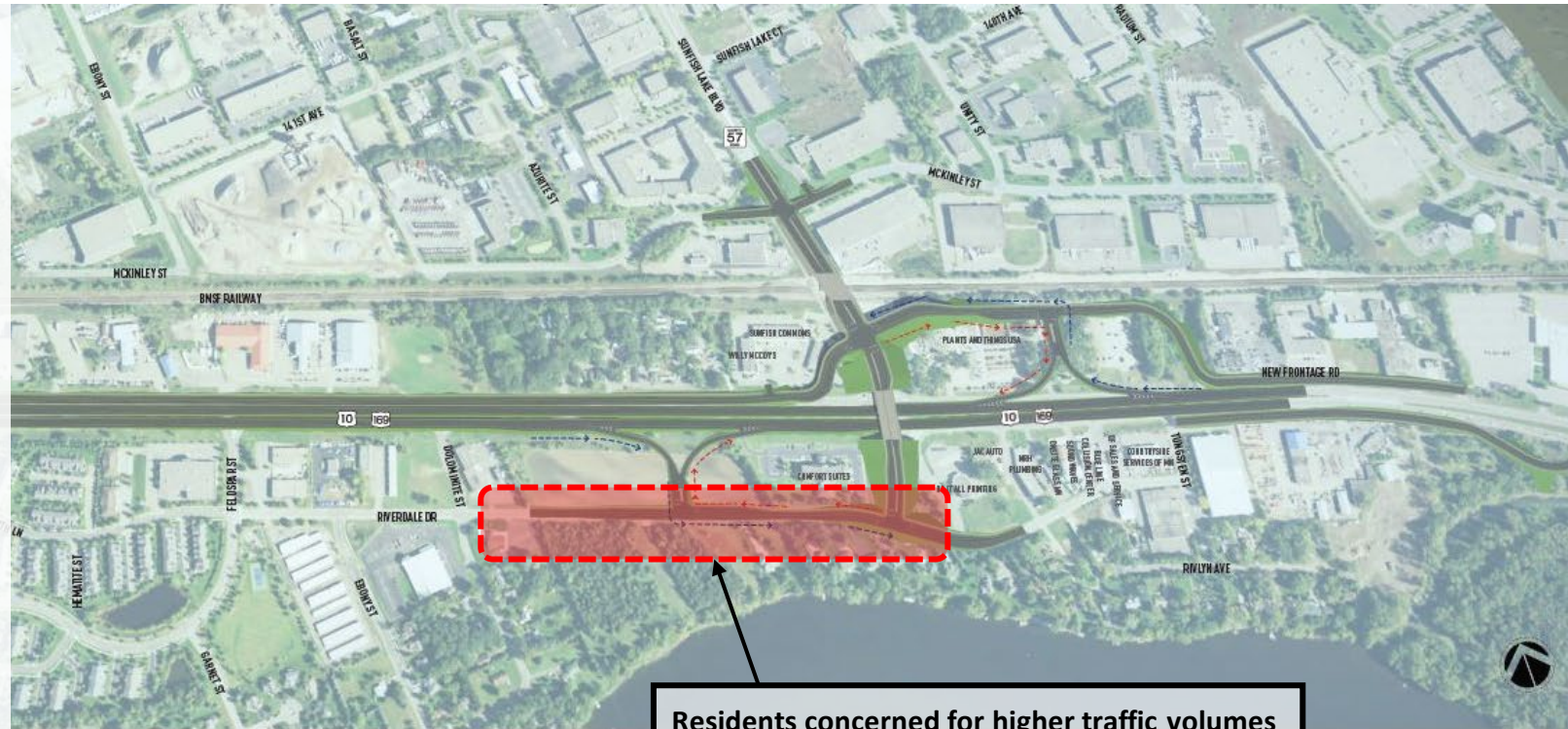
# 2019 Study Vision

## Design Progress Needs:

-  Find cost savings
-  Reduce property impacts

## Still relevant today:

-  Hwy and railroad grade separation
-  County roads over Highway 10



Residents concerned for higher traffic volumes as a result of proposed Hwy 10 access points

# 2021 Refined Alternate

## Ramsey Boulevard (CR 56) Interchange

- Remove existing traffic signal and replace with county road bridge over Hwy 10 and BNSF Railway
- Roundabout interchange
- North frontage road minimizes existing business acquisitions
- Realignment of Ramsey Blvd minimizes bridge lengths required
- Multi-use trail connections on east and west side of grade separated county road and along frontage roads

## North Frontage Road

- Maintains Oak Terrace Estates Community and all existing homes
- Removes driveways from high speed Hwy 10 traffic
- Continuous multi-use trail provided along the north side of the frontage road

## Sunfish Lake Boulevard (CR 57) Interchange

- Remove existing traffic signal and replace with county road bridge over Hwy 10 and BNSF Railway
- Roundabout interchange
- Realignment of Sunfish Lk Blvd minimizes existing business acquisitions and bridge lengths required
- Multi-use trail connections on east and west side of grade separated county road and along frontage road

## Mississippi West Regional Park

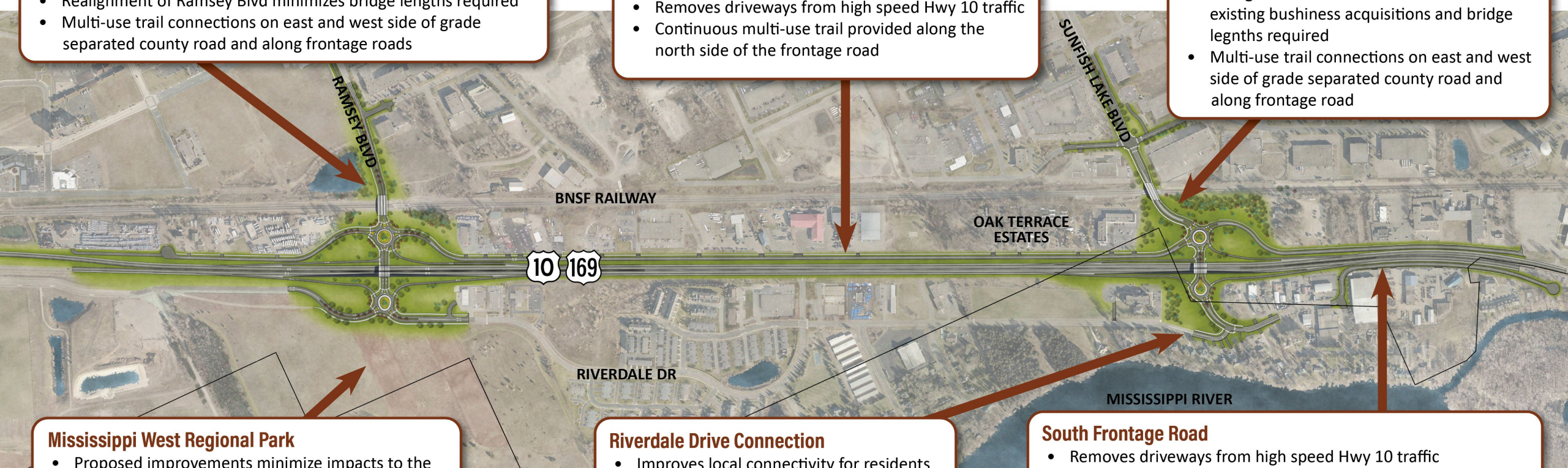
- Proposed improvements minimize impacts to the park to the extent possible
- Local and regional vehicle and non-motorized access to the park is greatly improved

## Riverdale Drive Connection

- Improves local connectivity for residents
- Interchange ramps directly adjacent to Hwy 10 keep most entering and exiting regional hwy traffic off Riverdale Dr

## South Frontage Road

- Removes driveways from high speed Hwy 10 traffic
- Roadway width and alignment accommodates large truck movements to and from businesses
- Sidewalk provided along the south side of the frontage road



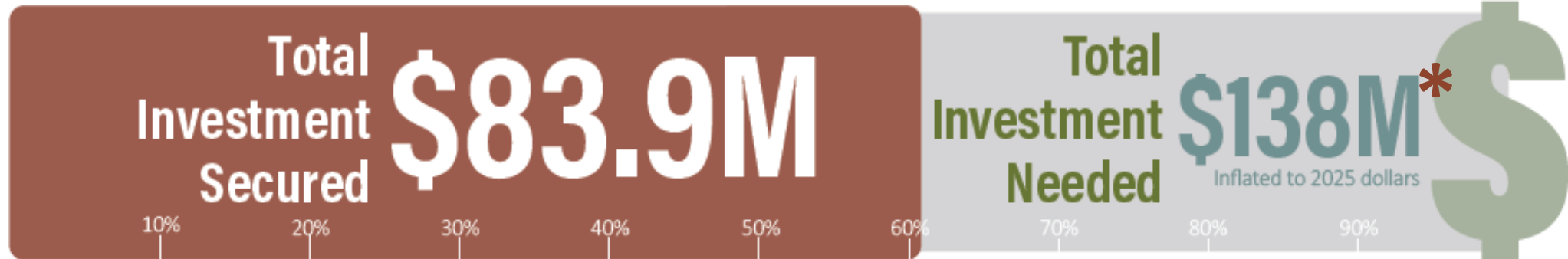
## Preliminary Draft Subject to Change

**Disclaimer:** This drawing represents a potential design concept only. This document is a draft, subject to change, and is provided for information only. This draft document does not commit Anoka County to construct the project as shown in part or in whole. The actual project plan may differ from this draft plan. Contact the Anoka County Highway Department with any questions: 763-324-3100



# Project Funding

## Funding Need



\*Study estimate – will update with more design detail

## Current Funding Sources

- \$1.5 million in 2017 State Rail Funds
- \$2 million in in 2018 Bonding Bill
- \$40 million in 2020 Infrastructure for Rebuilding America (INFRA)
- \$8.4 million in 2020 Bonding Bill
- Project partners



Anoka County  
MINNESOTA





# PROJECT SCHEDULE

# Ramsey Highway 10 – The Time is Now!

## Anoka Solution 2022-2023 Construction



All funding is committed! **\$ Total Investment 80M**

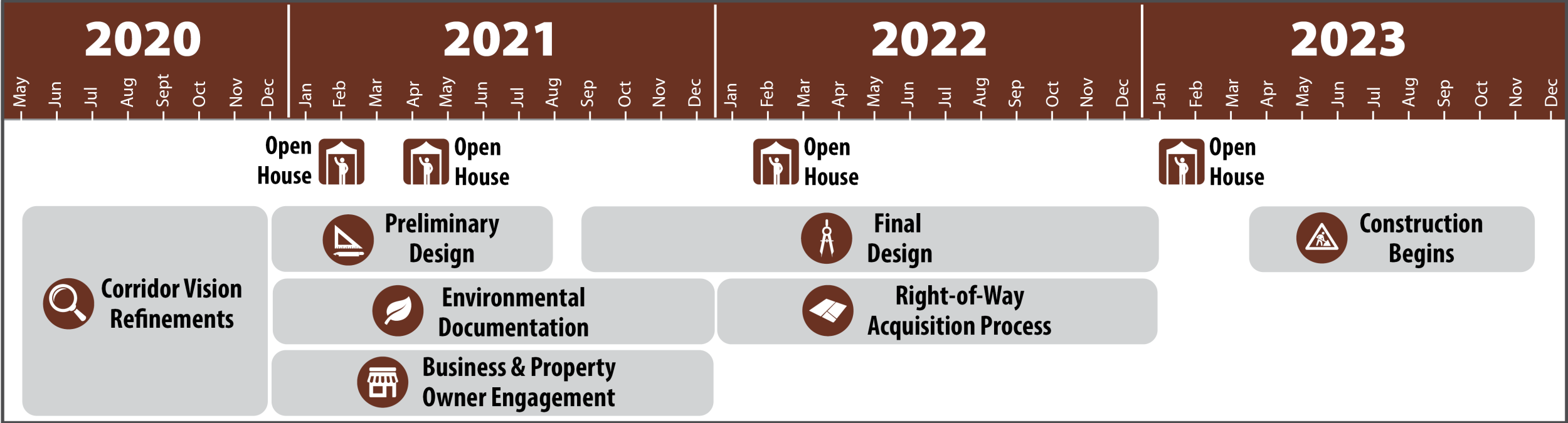
[AnokaHwy10.com](http://AnokaHwy10.com)



To learn more about the city of Anoka Highway 10 Project!



# Project Schedule



An aerial photograph of a highway interchange, likely I-70/I-25 in Denver, Colorado. The image shows the highway lanes, overpasses, and surrounding urban and industrial areas. Green landscape overlays are applied to the image, showing potential green spaces, trees, and landscaping around the highway and at the interchange points. The text 'ENVIRONMENTAL ASSESSMENT REEVALUATION ALTERNATES' is overlaid in large, bold, brown letters across the lower portion of the image.

# ENVIRONMENTAL ASSESSMENT REEVALUATION ALTERNATES

# 2021 Refined Alternate

## Ramsey Boulevard (CR 56) Interchange

- Remove existing traffic signal and replace with county road bridge over Hwy 10 and BNSF Railway
- Roundabout interchange
- North frontage road minimizes existing business acquisitions
- Realignment of Ramsey Blvd minimizes bridge lengths required
- Multi-use trail connections on east and west side of grade separated county road and along frontage roads

## North Frontage Road

- Maintains Oak Terrace Estates Community and all existing homes
- Removes driveways from high speed Hwy 10 traffic
- Continuous multi-use trail provided along the north side of the frontage road

## Sunfish Lake Boulevard (CR 57) Interchange

- Remove existing traffic signal and replace with county road bridge over Hwy 10 and BNSF Railway
- Roundabout interchange
- Realignment of Sunfish Lk Blvd minimizes existing business acquisitions and bridge lengths required
- Multi-use trail connections on east and west side of grade separated county road and along frontage road

## Mississippi West Regional Park

- Proposed improvements minimize impacts to the park to the extent possible
- Local and regional vehicle and non-motorized access to the park is greatly improved

## Riverdale Drive Connection

- Improves local connectivity for residents
- Interchange ramps directly adjacent to Hwy 10 keep most entering and exiting regional hwy traffic off Riverdale Dr

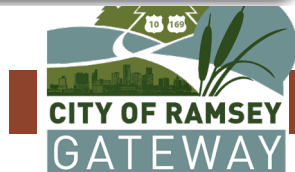
## South Frontage Road

- Removes driveways from high speed Hwy 10 traffic
- Roadway width and alignment accommodates large truck movements to and from businesses
- Sidewalk provided along the south side of the frontage road

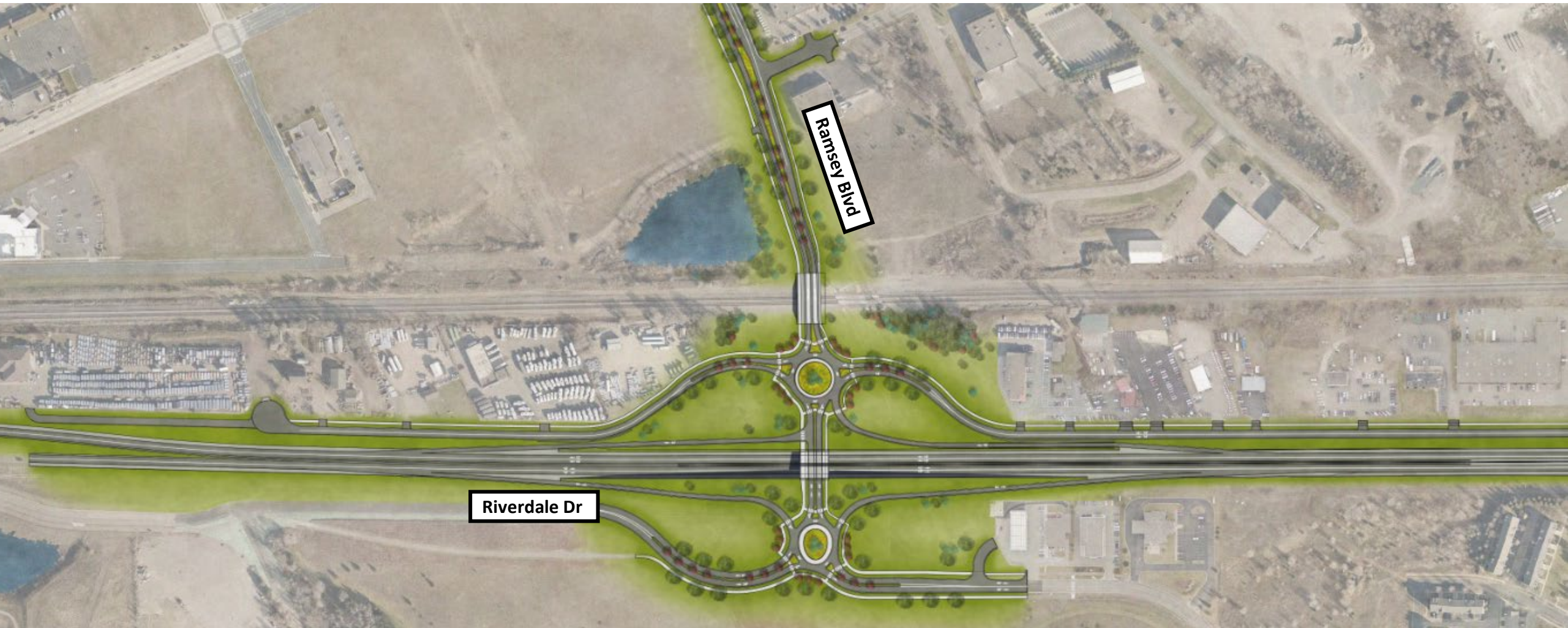


## Preliminary Draft Subject to Change

**Disclaimer:** This drawing represents a potential design concept only. This document is a draft, subject to change, and is provided for information only. This draft document does not commit Anoka County to construct the project as shown in part or in whole. The actual project plan may differ from this draft plan. Contact the Anoka County Highway Department with any questions: 763-324-3100

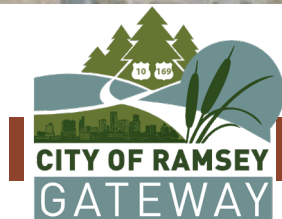


# 2021 Refined Alternate – Ramsey Boulevard

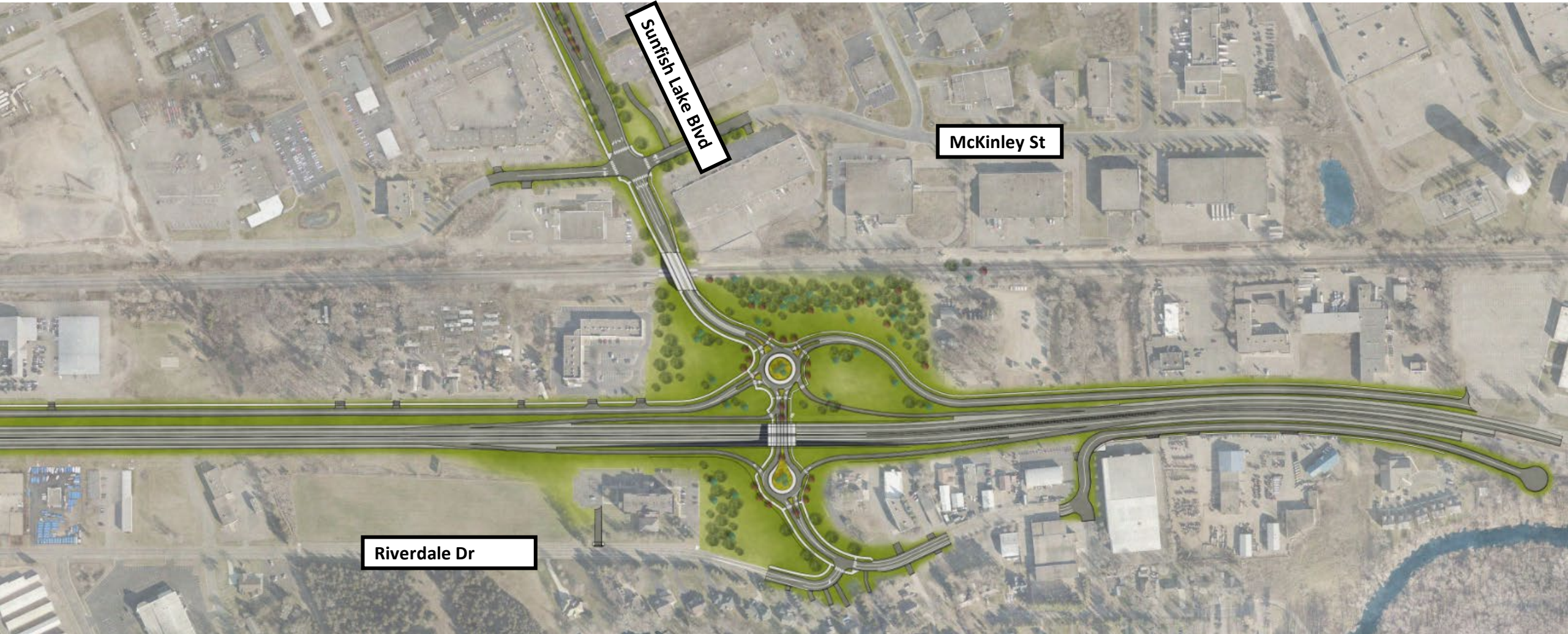


## Preliminary Draft Subject to Change

**Disclaimer:** This drawing represents a potential design concept only. This document is a draft, subject to change, and is provided for information only. This draft document does not commit Anoka County to construct the project as shown in part or in whole. The actual project plan may differ from this draft plan. Contact the Anoka County Highway Department with any questions: 763-324-3100

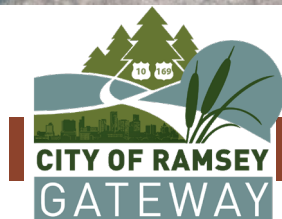


# 2021 Refined Alternate – Sunfish Lake Boulevard



## Preliminary Draft Subject to Change

**Disclaimer:** This drawing represents a potential design concept only. This document is a draft, subject to change, and is provided for information only. This draft document does not commit Anoka County to construct the project as shown in part or in whole. The actual project plan may differ from this draft plan. Contact the Anoka County Highway Department with any questions: 763-324-3100



# Comparison of Alternates Since 2009

**Criteria**

POOR FAIR GOOD

	Mobility: Traffic Capacity and Operations			Safety		Community Impacts					Cost
	Ramsey Blvd	Sunfish Blvd	Hwy 10	Access Points	Crash and Train Exposure	Property	Environmental	Park	Oak Terrace Estates	Land Use Compatibility	
<b>2045 Do Nothing</b>						N/A	N/A	N/A	N/A	N/A	N/A
<b>2009 Preferred Alternate</b>						 158-175 impacted		 8 Acres	 Acquires Estate		\$130M
<b>2019 Locally Preferred Vision</b>						 46 impacted		 4 Acres	 Avoids Estate		\$138M
<b>2021 Refined Alternate</b>						 37 impacted		 3 Acres or Less	 Avoids Estate		TBD



# Why Roundabouts in the 2021 Refined Alternate?

**15-20**  
mph average speeds

Lower, more consistent speeds on roadways



**Less** stopping and starting time.  
**Less** idling time.

Compared to current conditions...

**67%** reduction in **DELAY** for Ramsey Blvd at highway interchange

**64%** reduction in **DELAY** for Sunfish Lake Blvd at highway interchange



**Fewer Conflict Points**  
than traditional controls

Vehicle-vehicle conflict points are locations where a vehicle interacts with another vehicle.

**22** conflict points  
vs.  
**53**

at existing signalized at grade intersection

Ramsey Blvd at Hwy 10

**20** conflict points  
vs.  
**46**

at existing signalized at grade intersection

Sunfish Lake Blvd at Hwy 10



Improved **PEDESTRIAN SAFETY**



**83%** reduction in **SERIOUS INJURY CRASHES**

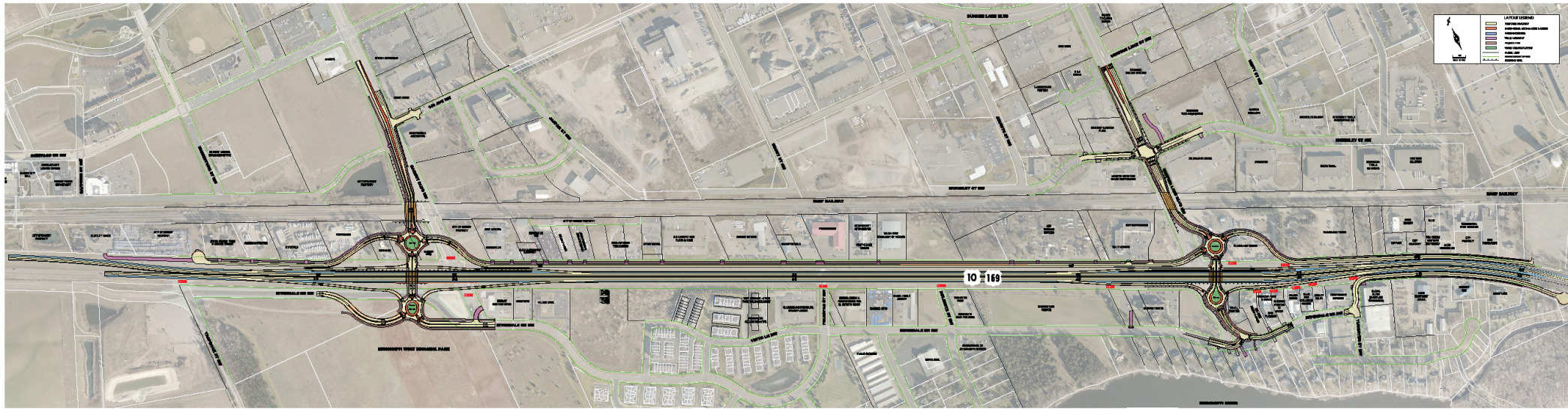
Smaller road footprint due to absence of turn lanes



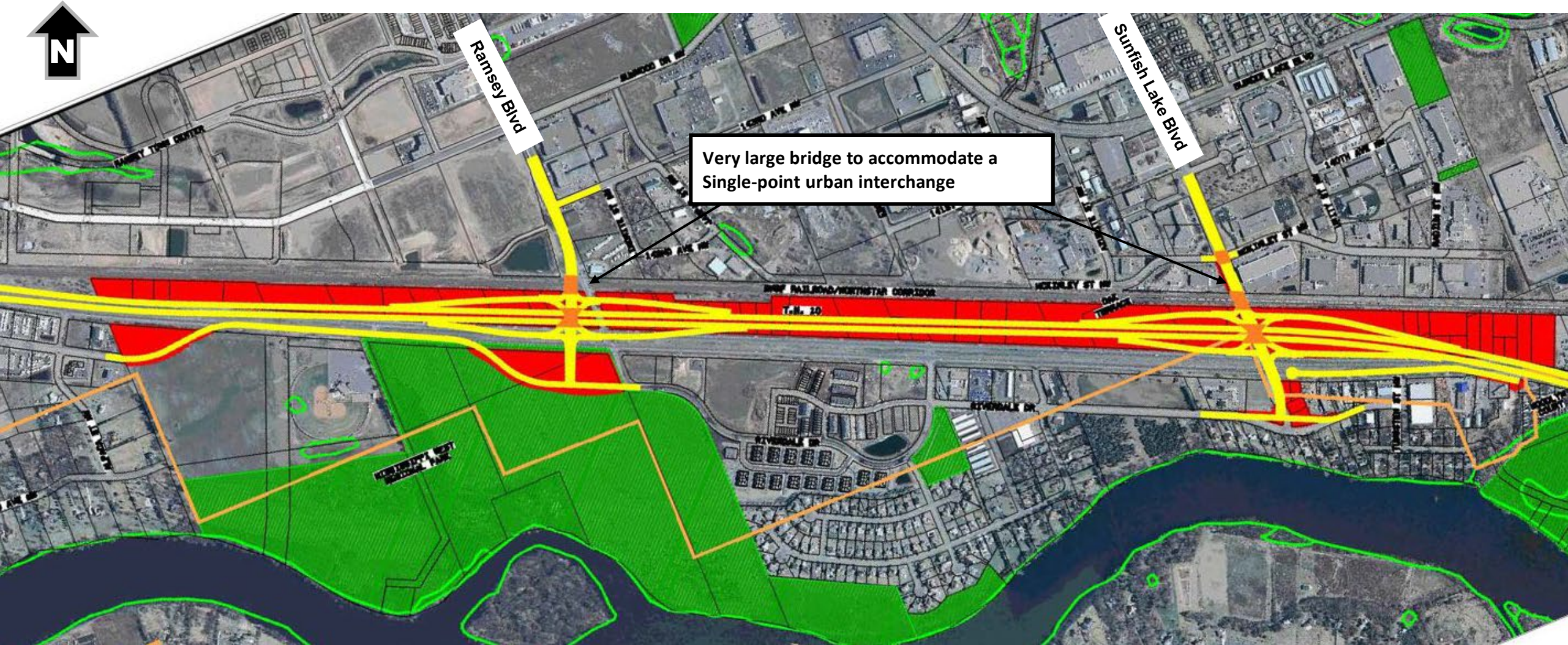
More flexibility in how and where the roadways intersect



**Fewer Property Impacts**  
than traditional intersections



# Why Roundabouts instead of the 2009 Preferred SPUIs?



An aerial photograph of a highway interchange, likely I-70/I-26 in Ramsey, Colorado. The image shows a multi-lane highway with several overpasses and ramps. The surrounding area includes residential neighborhoods, commercial buildings, and some undeveloped land. The image is overlaid with a semi-transparent green landscape design, showing planned green spaces, trees, and pedestrian paths along the highway corridors and at the interchange points. The text "COMMUNITY IMPACT CONSIDERATIONS" is overlaid in a large, bold, brown font across the center of the image.

# COMMUNITY IMPACT CONSIDERATIONS

# Business & Property Owner Engagement

## Dec 2020 – Feb 2021

- Sunfish Lake Blvd Group Meeting
- Ramsey Blvd Group Meeting
- One-on-One Meetings
- Riverdale Dr Residents Meeting
- Oak Terrace Estates Residents Meeting

Resident support for design updates that keep exiting and entering highway traffic off Riverdale Drive



Some businesses anticipating impacts have plans to **relocate**, some desire to **redevelop** and even **expand** within their current location

Business' need to understand **project timing**, specifically **right-of-way acquisition** if property impacts are expected

Concern for business visibility and security with proposed county road bridges over **Highway 10 required retaining walls**

Business desire to **mitigate or avoid impact** to select parcels identified for expansion or developer interest

Business concerns for ease and safety of truck movements along **proposed frontage road connections**



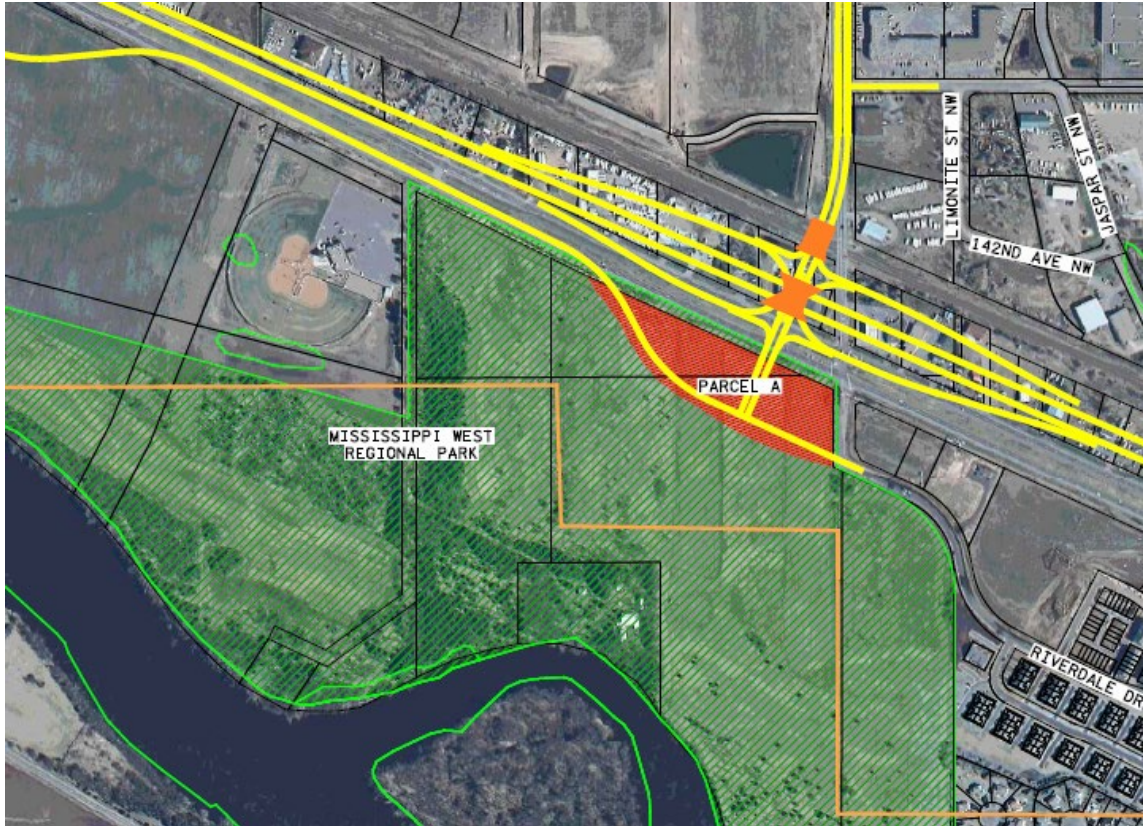
Oak Terrace Estates support for **community access to frontage road** as opposed to existing access to Highway 10



# Mississippi West Regional Park Impacts

## 2009 Preferred Alternate

8 acres of impact



## 2021 Refined Alternate

Approximately 3 acres of impact



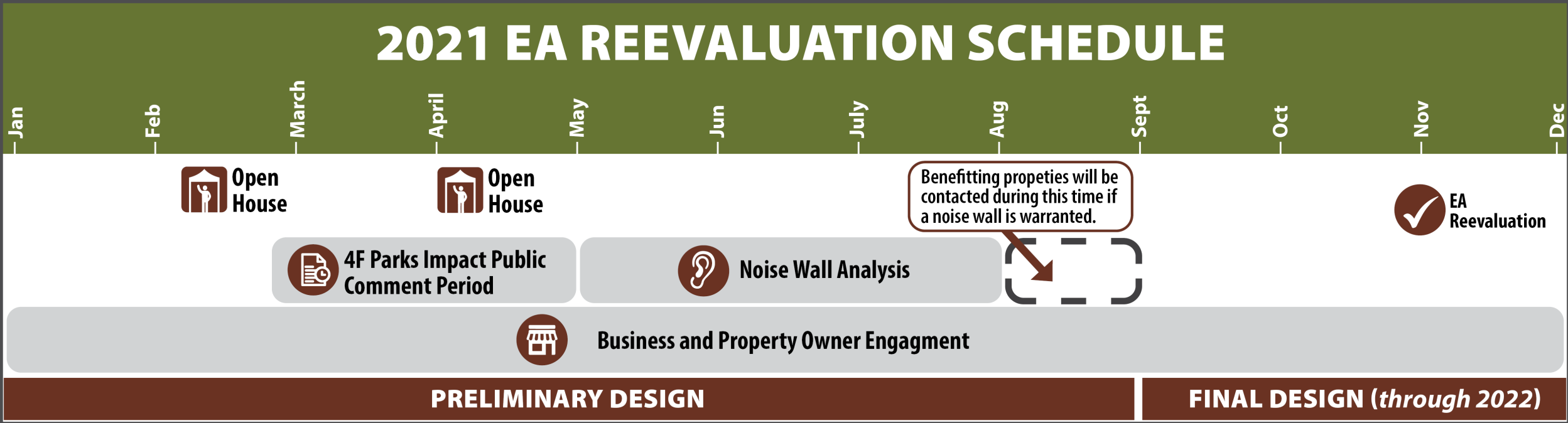
### Preliminary Draft Subject to Change

**Disclaimer:** This drawing represents a potential design concept only. This document is a draft, subject to change, and is provided for information only. This draft document does not commit Anoka County to construct the project as shown in part or in whole. The actual project plan may differ from this draft plan. Contact the Anoka County Highway Department with any questions: 763-324-3100



# Environmental Documentation

- Environmental Assessment (EA) Reevaluation to meet Federal requirements
- Must be approved by Anoka County, MnDOT, and Federal Highway Administration



An aerial photograph of a highway interchange, likely I-70 and I-105, with green landscape overlays indicating planned improvements. The overlays include landscaped medians, shoulders, and roundabouts at the interchange points. The surrounding area shows a mix of commercial buildings, parking lots, and residential areas.

# NEXT STEPS

# Comparison of Alternates Since 2009



	Mobility: Traffic Capacity and Operations			Safety		Community Impacts					
	Ramsey Blvd	Sunfish Blvd	Hwy 10	Access Points	Crash and Train Exposure	Property	Environmental	Park	Oak Terrace Estates	Land Use Compatibility	Cost
2045 Do Nothing						N/A	N/A	N/A	N/A	N/A	N/A
2009 Preferred Alternate						 158-175 impacted		 8 Acres	 Acquires Estate		\$130M
2019 Locally Preferred Vision						 46 impacted		 4 Acres	 Avoids Estate		\$138M
2021 Refined Alternate						 37 impacted		 3 Acres or Less	 Avoids Estate		TBD

2009 Preferred Alternate or the 2021 Refined Alternate?

Your input today and through March 5 helps the project team select a preferred alternative!



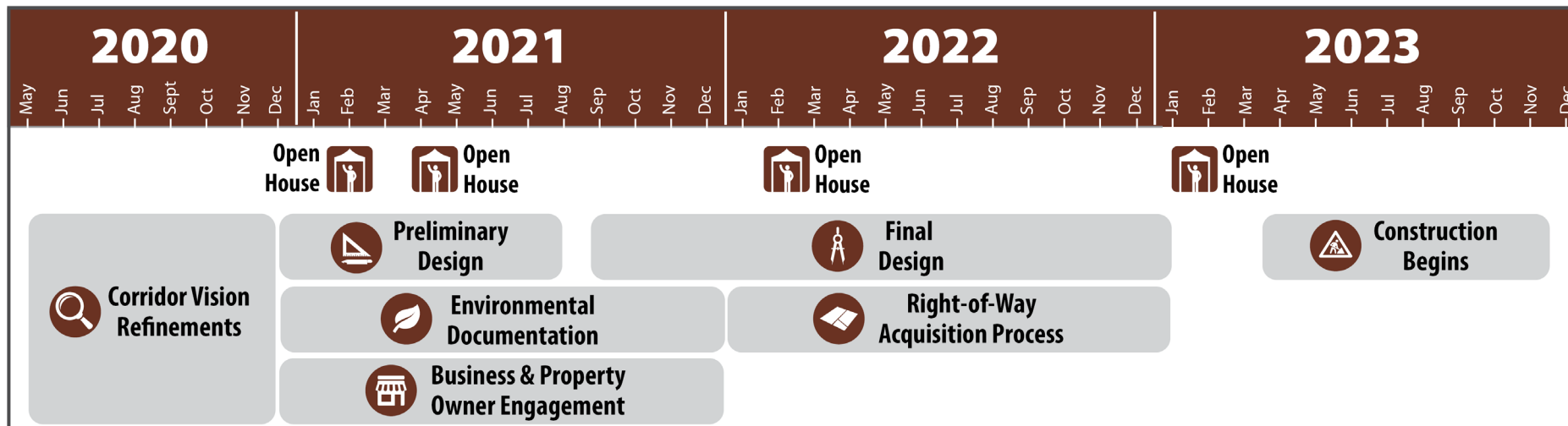
# Next Steps

- **Provide Feedback Today?**

- Join your interest group
- Unmute and speak up!!!

- **Provide Feedback by March 5?**

- Visit [AnokaCountyRamseyGateway.com](http://AnokaCountyRamseyGateway.com) – online comment card and comment maps
- Email or call project contacts:
  - Jason Orcutt, Anoka County Project Manager - 763-324-3115, [Jason.Orcutt@co.anoka.mn.us](mailto:Jason.Orcutt@co.anoka.mn.us)
  - Ashley Hudson, Project Design Consultant – 701-566-2349, [Ashley.Hudson@bolton-menk.com](mailto:Ashley.Hudson@bolton-menk.com)



# Virtual Open House Demonstration



Ramsey Gateway US-10

## Ramsey Gateway US-10

Ramsey Gateway U.S. Highway 10 Project Virtual Open House

Scroll Down to Continue | February 12, 2021

[Welcome](#) [Purpose & Need](#) [2021 Refined Alternate](#) [Local Frontage Roads](#) [Pedestrians, Bikes, Transit](#) [Park Impacts](#) [Other Regional Projects](#)

### Welcome to the Ramsey Gateway U.S. Highway 10 Project Virtual Open House!

This virtual engagement platform will provide up-to-date information on the history of Highway 10, introduce the proposed improvements, and share the anticipated timeline to construction. Click through the tabs on this website to learn about each part of the project and provide your feedback!

[AnokaCountyRamseyGateway.com](https://AnokaCountyRamseyGateway.com)



# Thank You & Stay Informed!



## Visit the Project Website

- [AnokaCountyRamseyGateway.com](http://AnokaCountyRamseyGateway.com)
- Check back frequently for schedule updates and announcements about events such as open houses



## Subscribe to e-Bulletins

- Subscribe to receive project updates and announcements by email.



## Follow Anoka County Social Media

- Anoka County (@AnokaCountyMN) will share project news and announcements on Facebook and Twitter



## Reach out to the Project Contacts

- Jason Orcutt, Anoka County Project Manager - 763-324-3115, [Jason.Orcutt@co.anoka.mn.us](mailto:Jason.Orcutt@co.anoka.mn.us)
- Ashley Hudson, Project Design Consultant – 701-566-2349, [Ashley.Hudson@bolton-menk.com](mailto:Ashley.Hudson@bolton-menk.com)

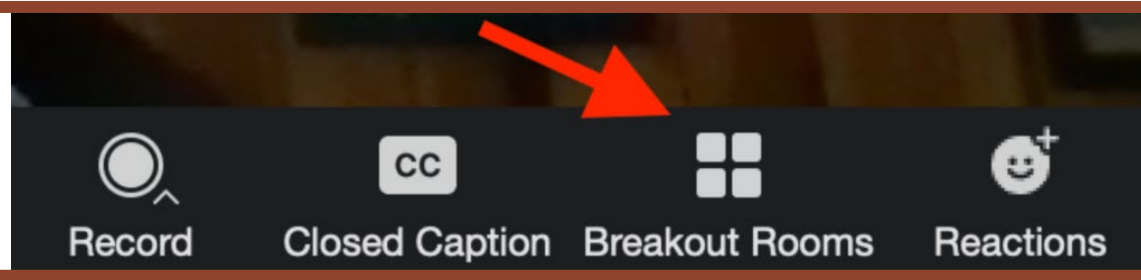
# We want your feedback!

- **What are your comments on the Existing 2009 Preferred Alternate and the 2021 Refined Alternate?**
- **Do you have any concerns regarding the traffic flow, safety, access, or impacts?**
- **Is there anything you would change or add?**



# Join your discussion group!

Click the breakout room button to select the group you would like to join!



## Ramsey Blvd



Resident Group A



Business/Property  
Owner Group A

## Sunfish Lake Blvd

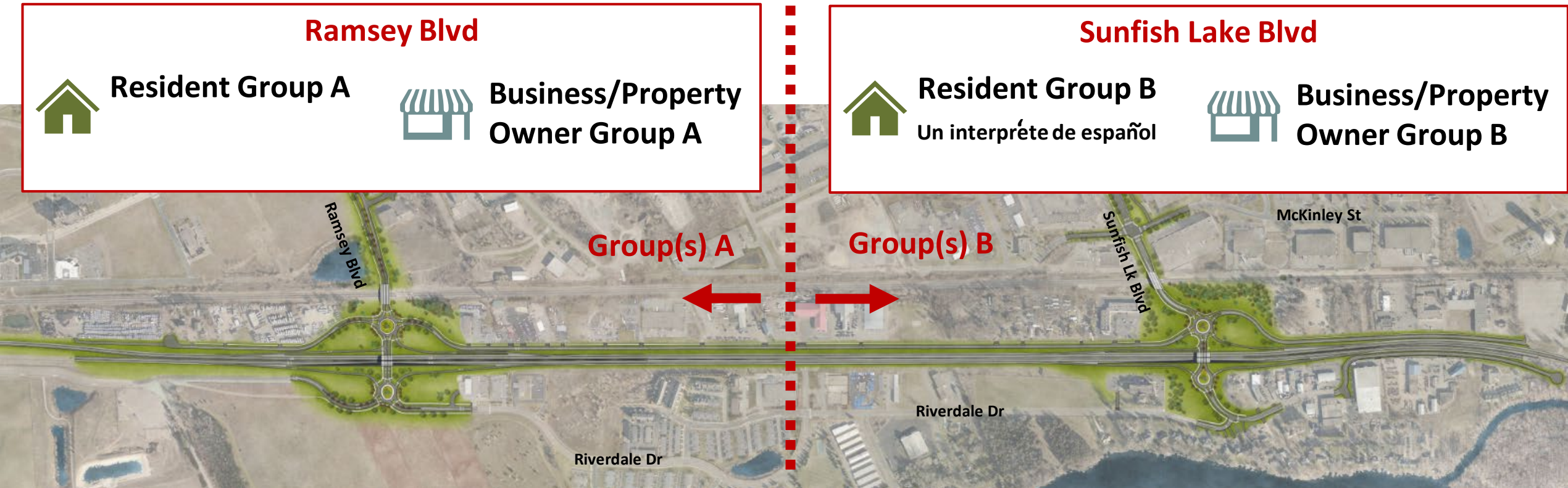


Resident Group B

Un intérprete de español



Business/Property  
Owner Group B



# Thank You & Stay Informed!



## Visit the Project Website

- [AnokaCountyRamseyGateway.com](http://AnokaCountyRamseyGateway.com)
- Check back frequently for schedule updates and announcements about events such as open houses



## Subscribe to e-Bulletins

- Subscribe to receive project updates and announcements by email.



## Follow Anoka County Social Media

- Anoka County (@AnokaCountyMN) will share project news and announcements on Facebook and Twitter



## Reach out to the Project Contacts

- Jason Orcutt, Anoka County Project Manager - 763-324-3115, [Jason.Orcutt@co.anoka.mn.us](mailto:Jason.Orcutt@co.anoka.mn.us)
- Ashley Hudson, Project Design Consultant – 701-566-2349, [Ashley.Hudson@bolton-menk.com](mailto:Ashley.Hudson@bolton-menk.com)