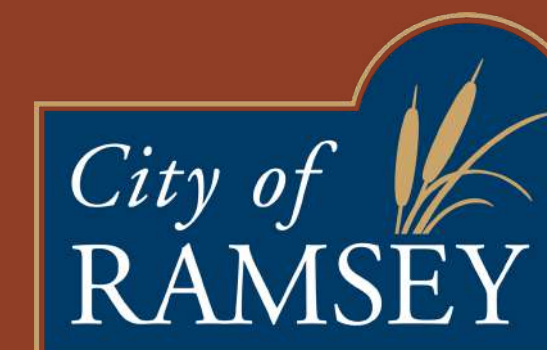


# Welcome!

## Please sign in.



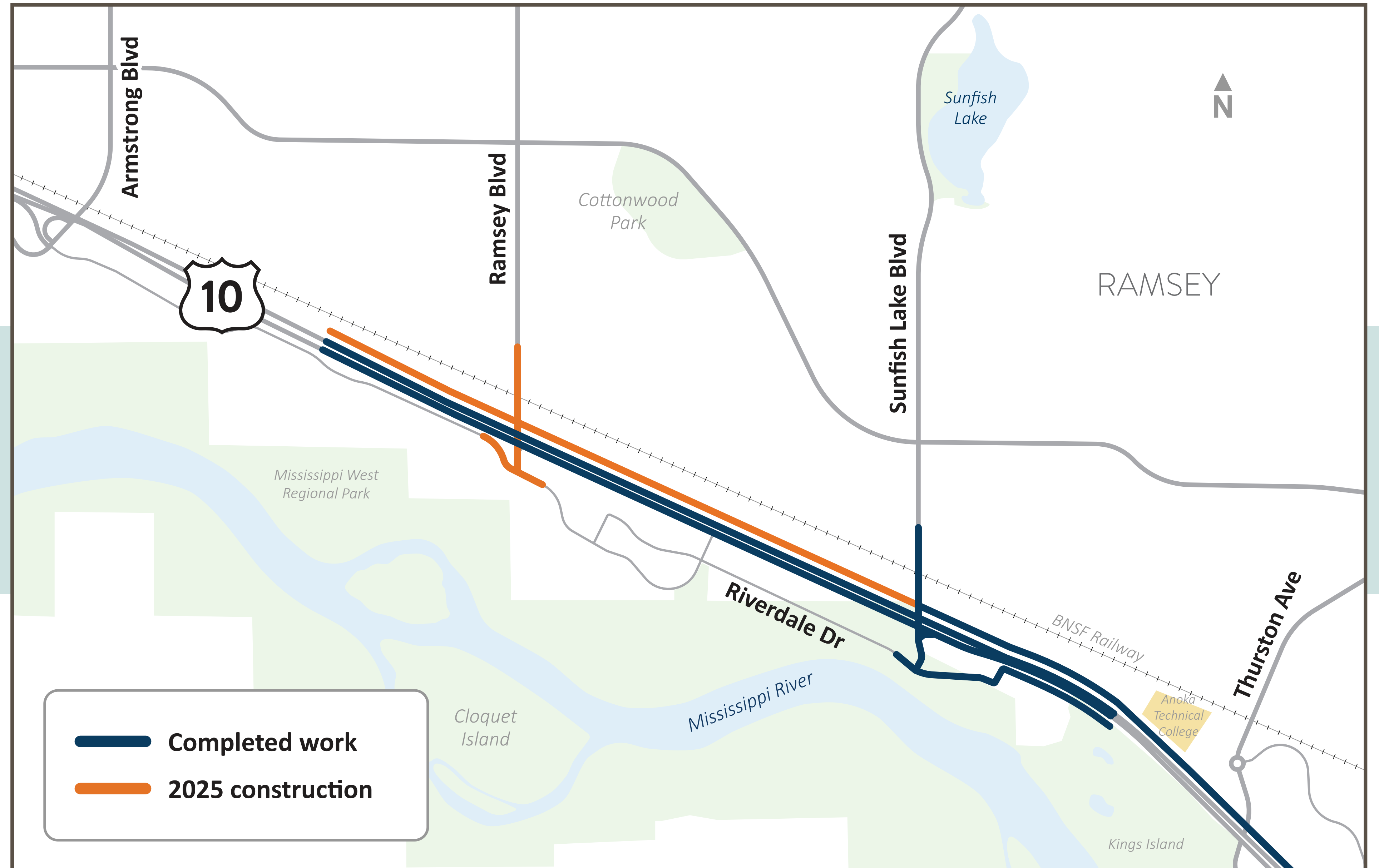


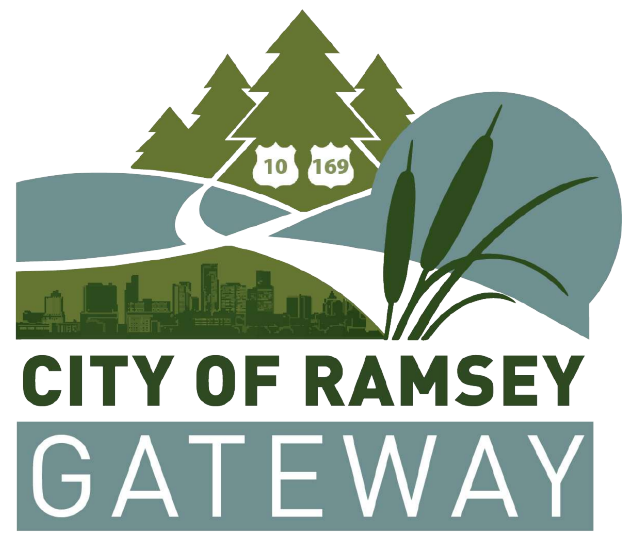
# Project Overview

Anoka County, MnDOT, and the City of Ramsey are working together to reconstruct and improve roads and bridges on

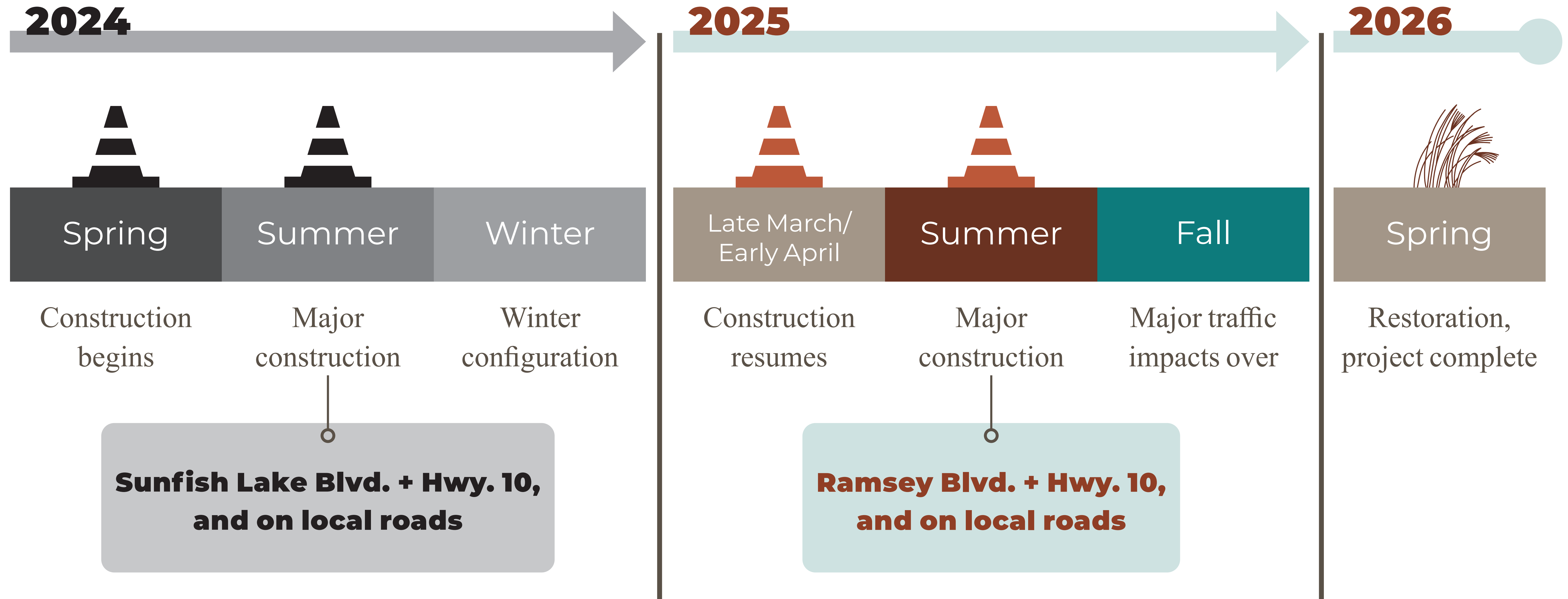
**Highway 10 between Armstrong Boulevard and Sunfish Lake Boulevard.**

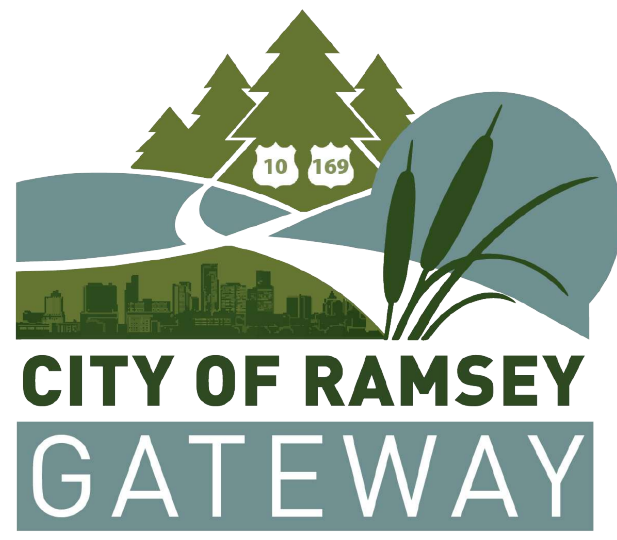
When complete, the new Highway 10 will improve traffic flow, decrease congestion, and increase safety.





# Project Schedule

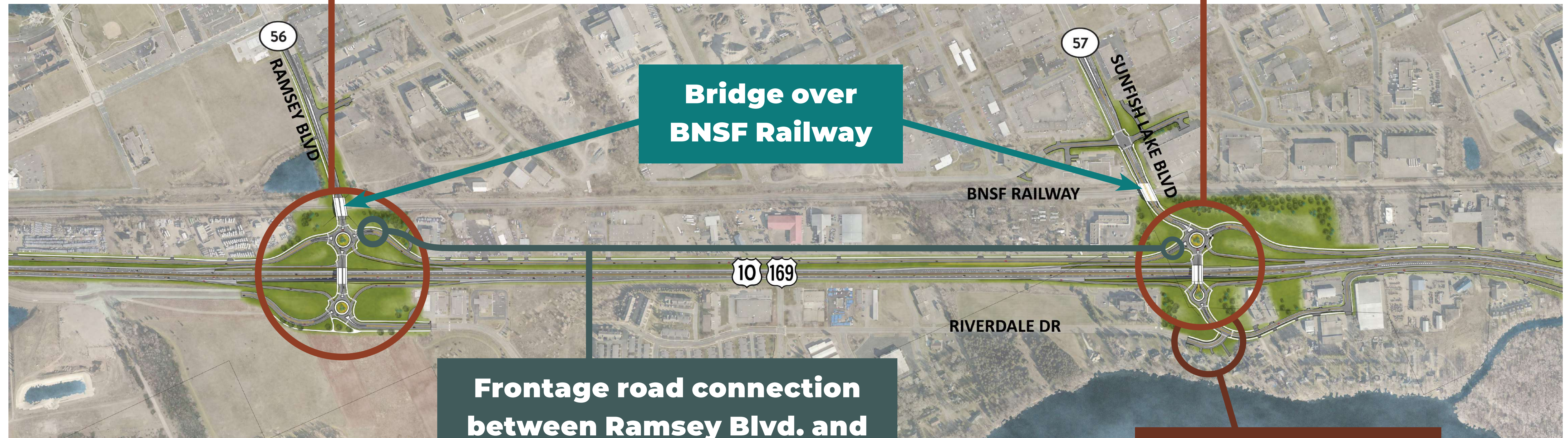




# Project Features

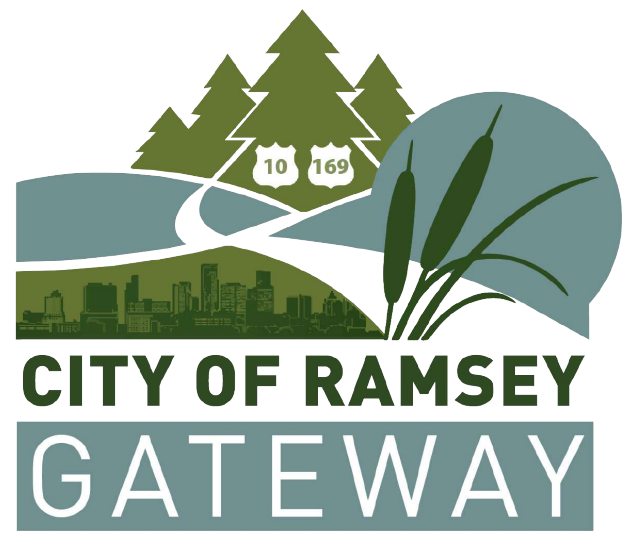
**Ramsey Blvd. / Hwy. 10 interchange**

**Sunfish Lake Blvd. / Hwy. 10 interchange**



**Frontage road connection between Ramsey Blvd. and Sunfish Lake Blvd.**

**Riverdale Dr. connection at Sunfish Lake Blvd.**



# Business Outreach

Throughout construction, a business liaison will work closely with local businesses that are impacted by closures and road access changes.

- One-on-one business contact prior to major construction impacts
- Change to ongoing in-person check-ins during impacts
- Custom detour maps
- Supporting communication materials as needed
- Social media business spotlight campaign

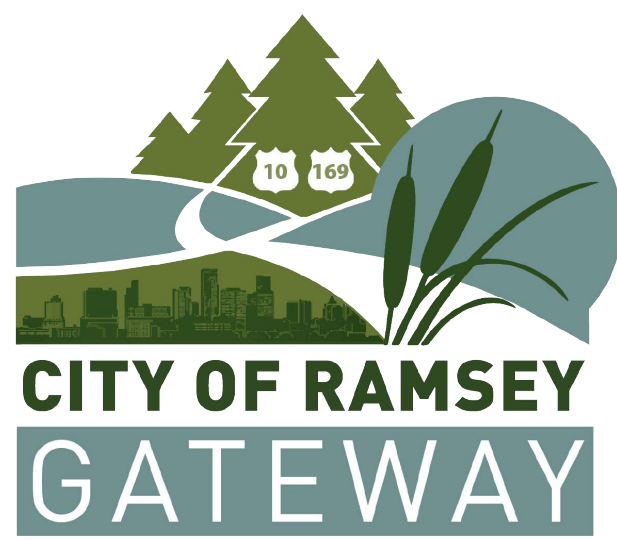


If you have any questions or concerns regarding impacts to your business, reach out to:

Greg Webber

763-248-1697

[Greg.Weber@bolton-menk.com](mailto:Greg.Weber@bolton-menk.com)



# Project Benefits

## **It will be worth it.**

Once complete, Ramsey will benefit from a safe and reliable Highway 10 that will serve the region well with:

Better connected sidewalks and trails

Railroad grade separation

New interchanges that provide a safer and better way to cross Hwy. 10



No more traffic signals or crossings on Hwy. 10 through Ramsey

Improved connections to the highway and to the community

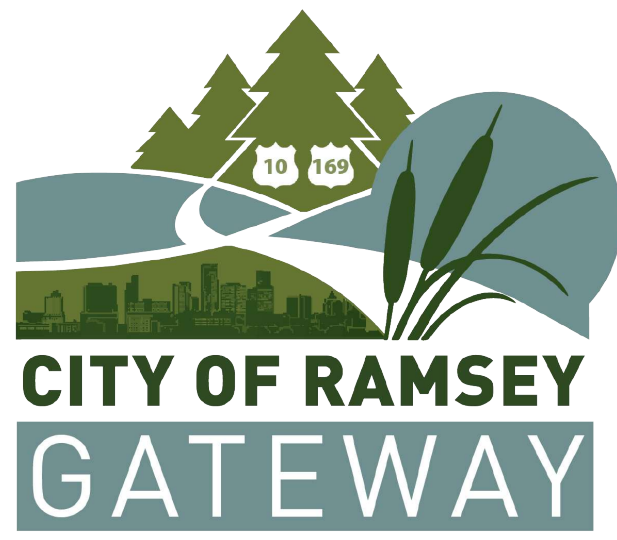


# People who walk, bike, and roll

## Mississippi West Regional Trail closed Fall 2023 - Fall 2025

-  Trail closed
-  Riverdale closed summer through fall 2025





# Stay Connected

**Still  
don't see the  
information  
you need?**

**Have  
additional  
concerns or  
questions?**



**Visit the Highway 10 Ramsey  
Gateway project website:  
[AnokaCountyRamseyGateway.com](http://AnokaCountyRamseyGateway.com)**

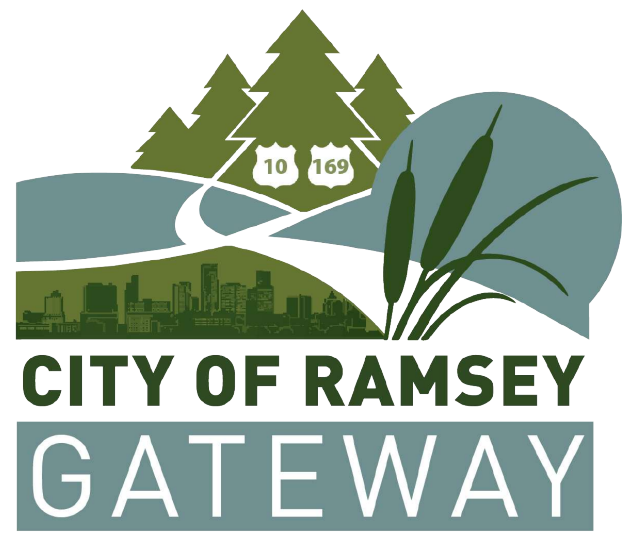


**Email:  
[info@hwy10Ramsey.com](mailto:info@hwy10Ramsey.com)**



**763-400-3877**

The dedicated project communications team is available to answer questions and help plan your route.



# Project Visualizations

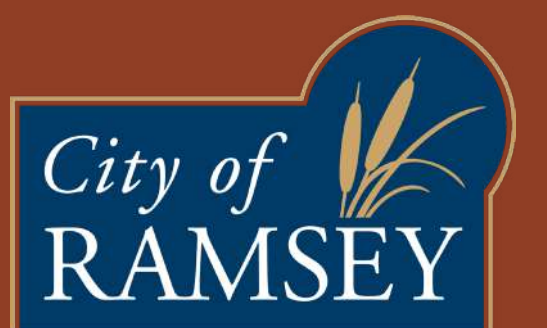
## Sunfish Lake Blvd.

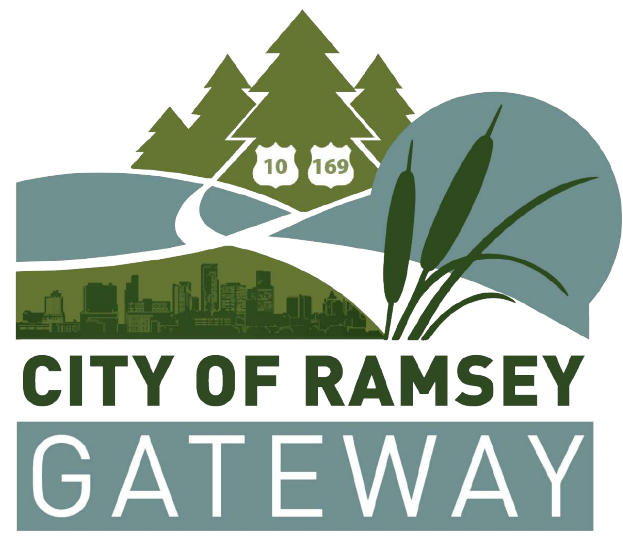


## Ramsey Blvd.



Check our construction progress drone video!



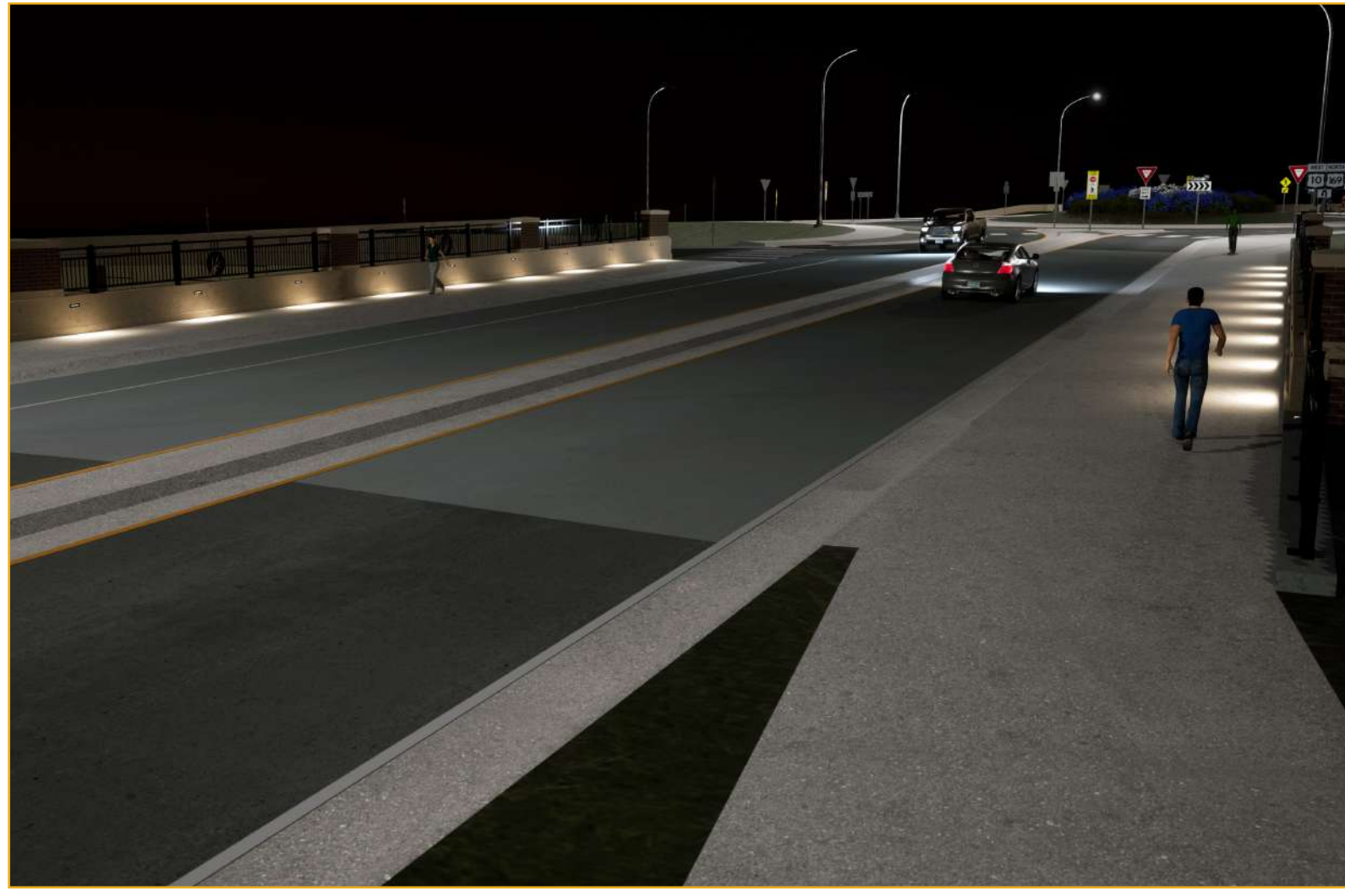


# Design Aesthetics

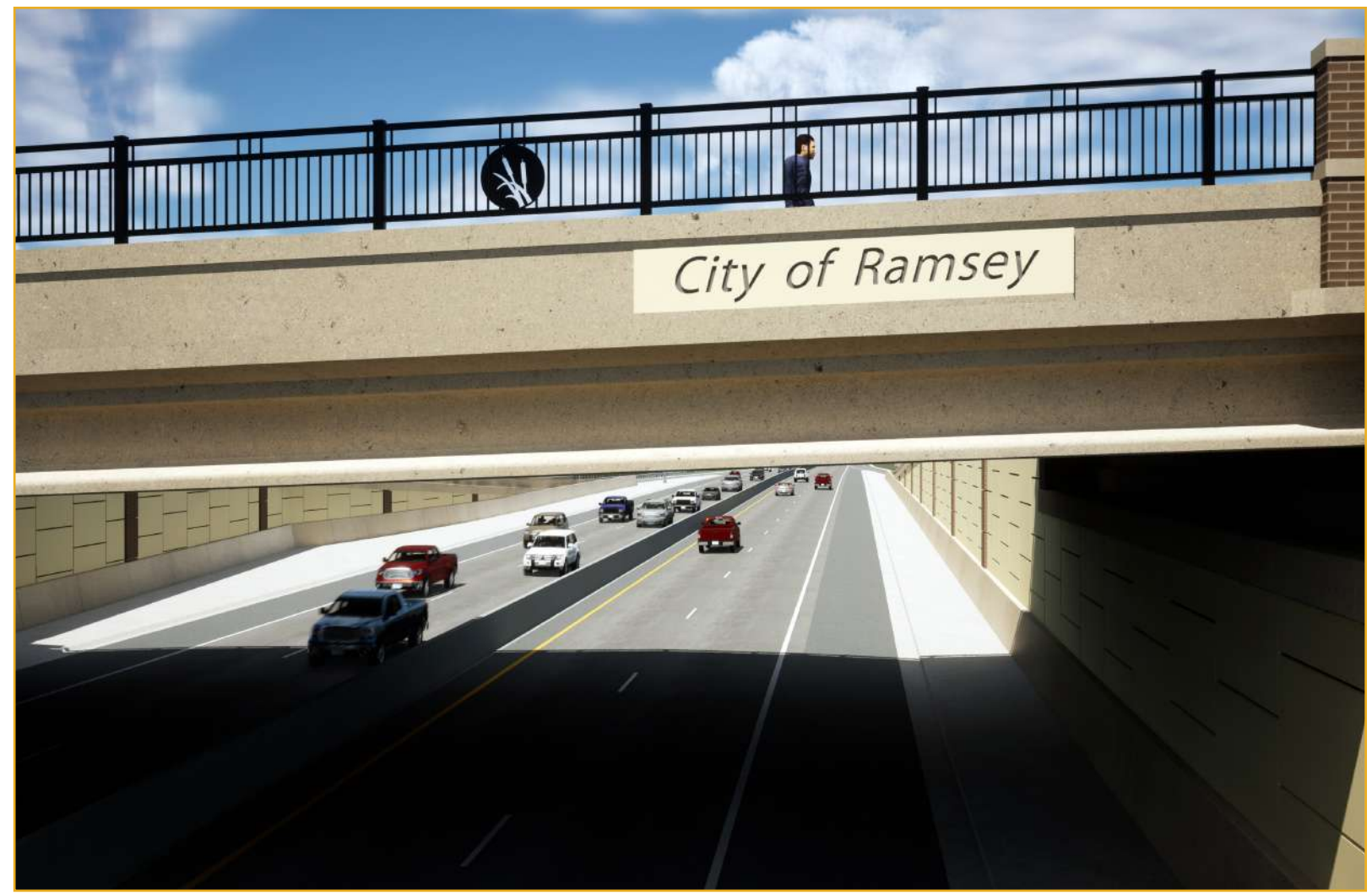
## Roundabout Details



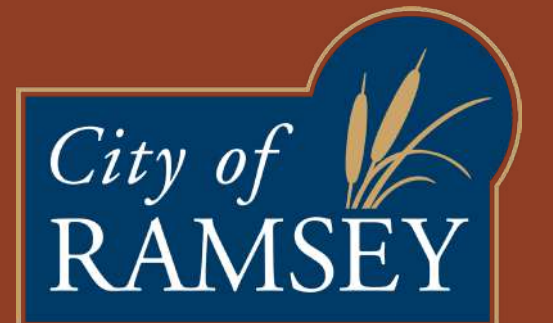
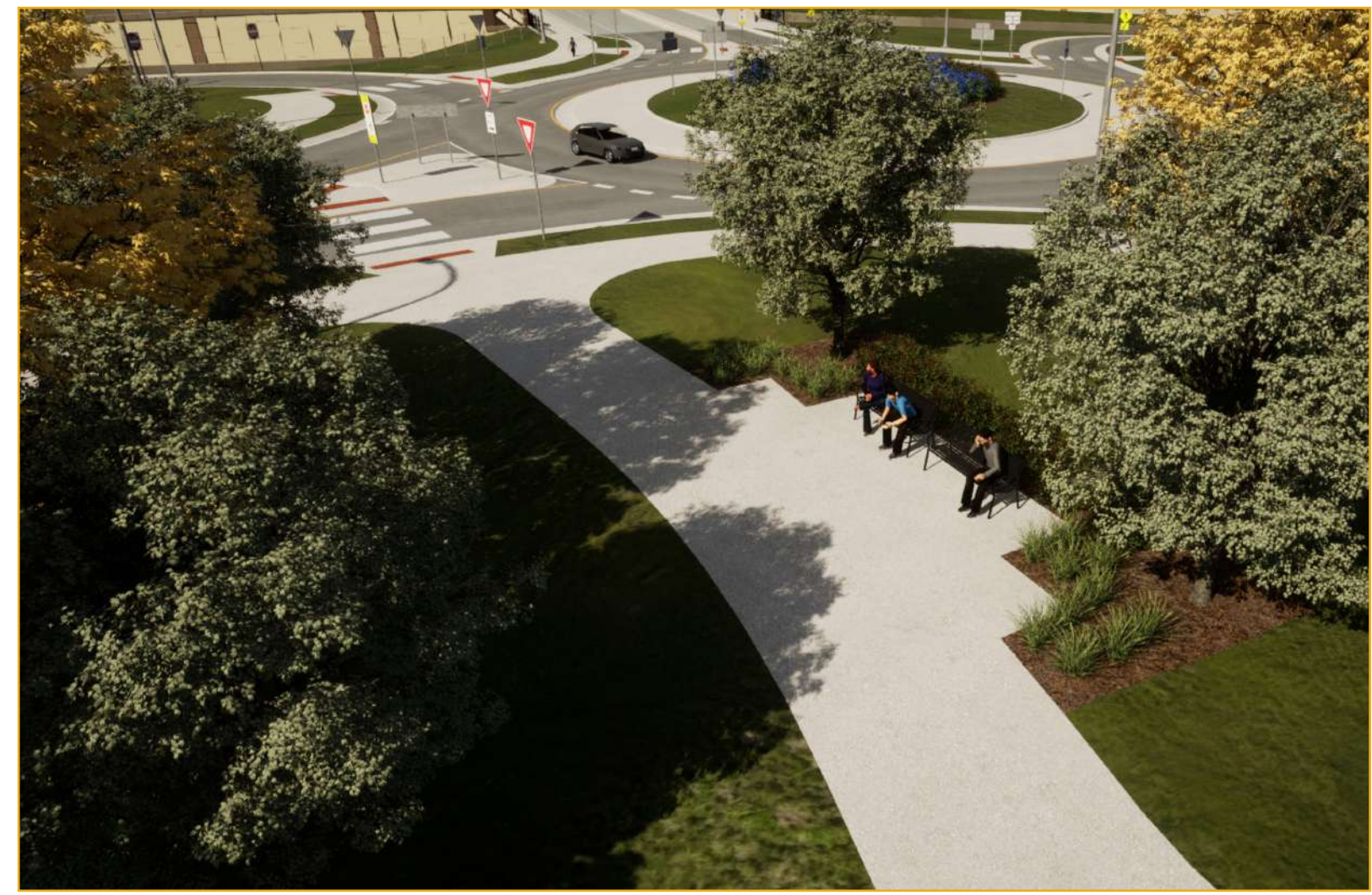
## Bridge Crossings

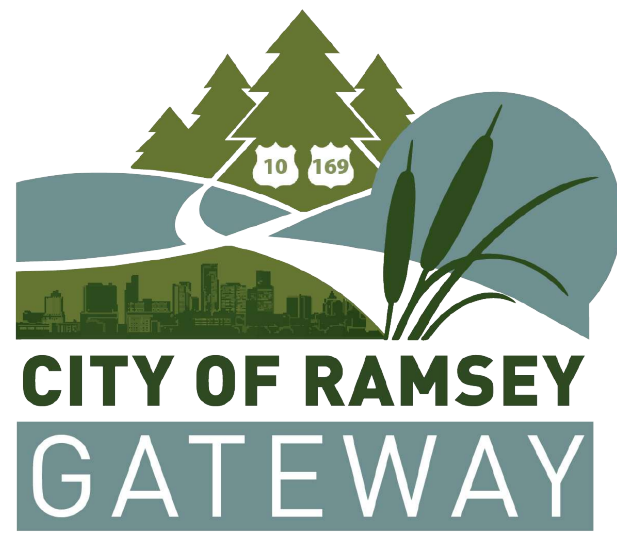


## Bridge Details



## Pedestrian & Bicycle Amenities





# Staging Goals



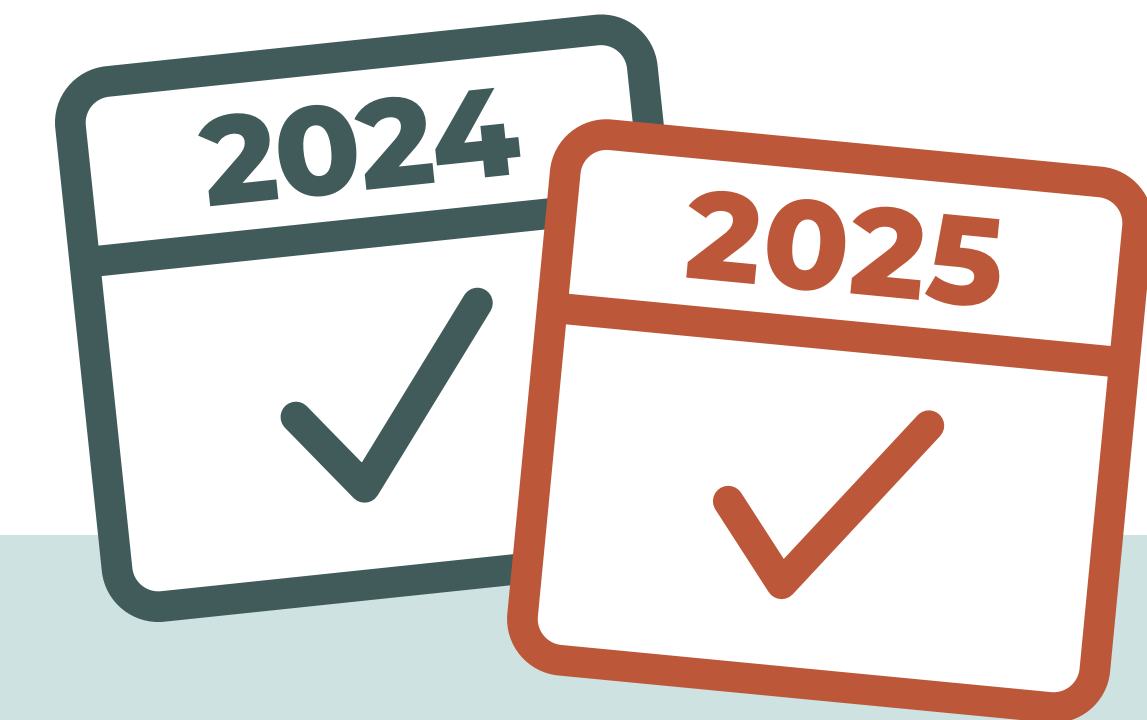
**Minimize impacts to the community**



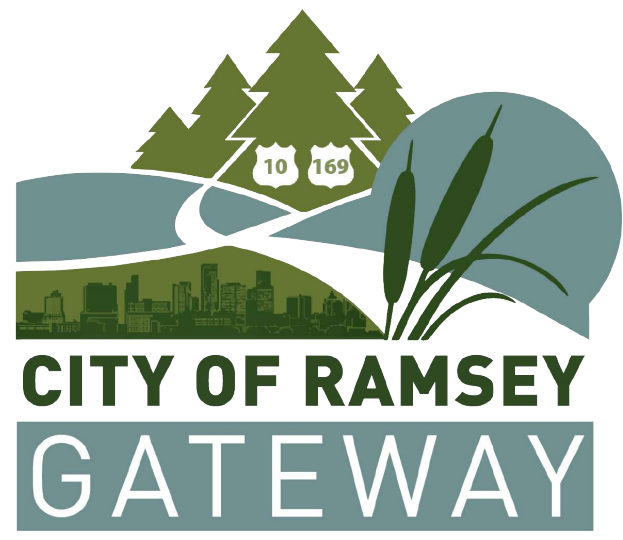
**Highway 10 remains open to two lanes in each direction (most of the time)**



**Impact one interchange/major access point per year**

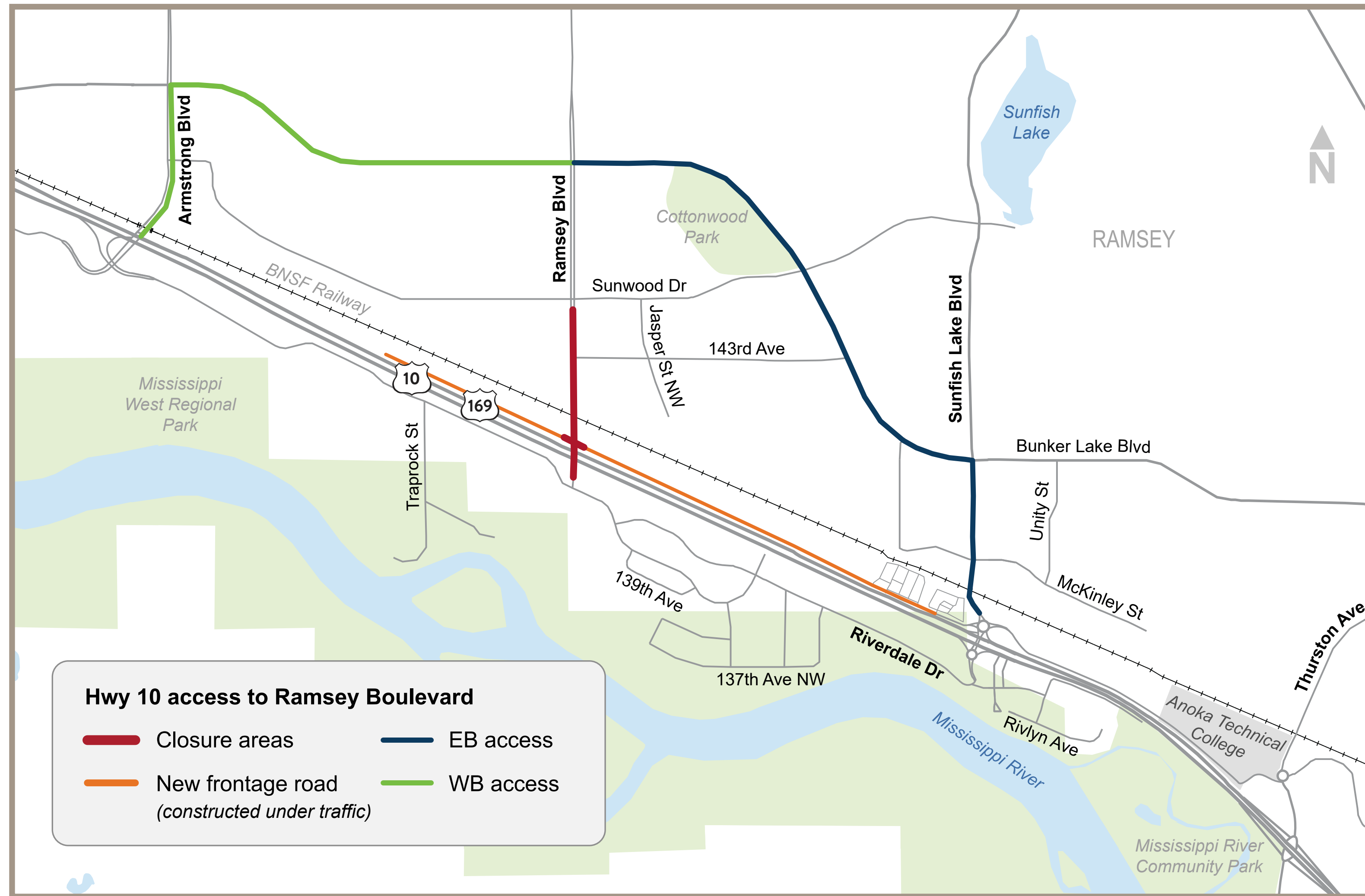


**Major construction completed in two years**

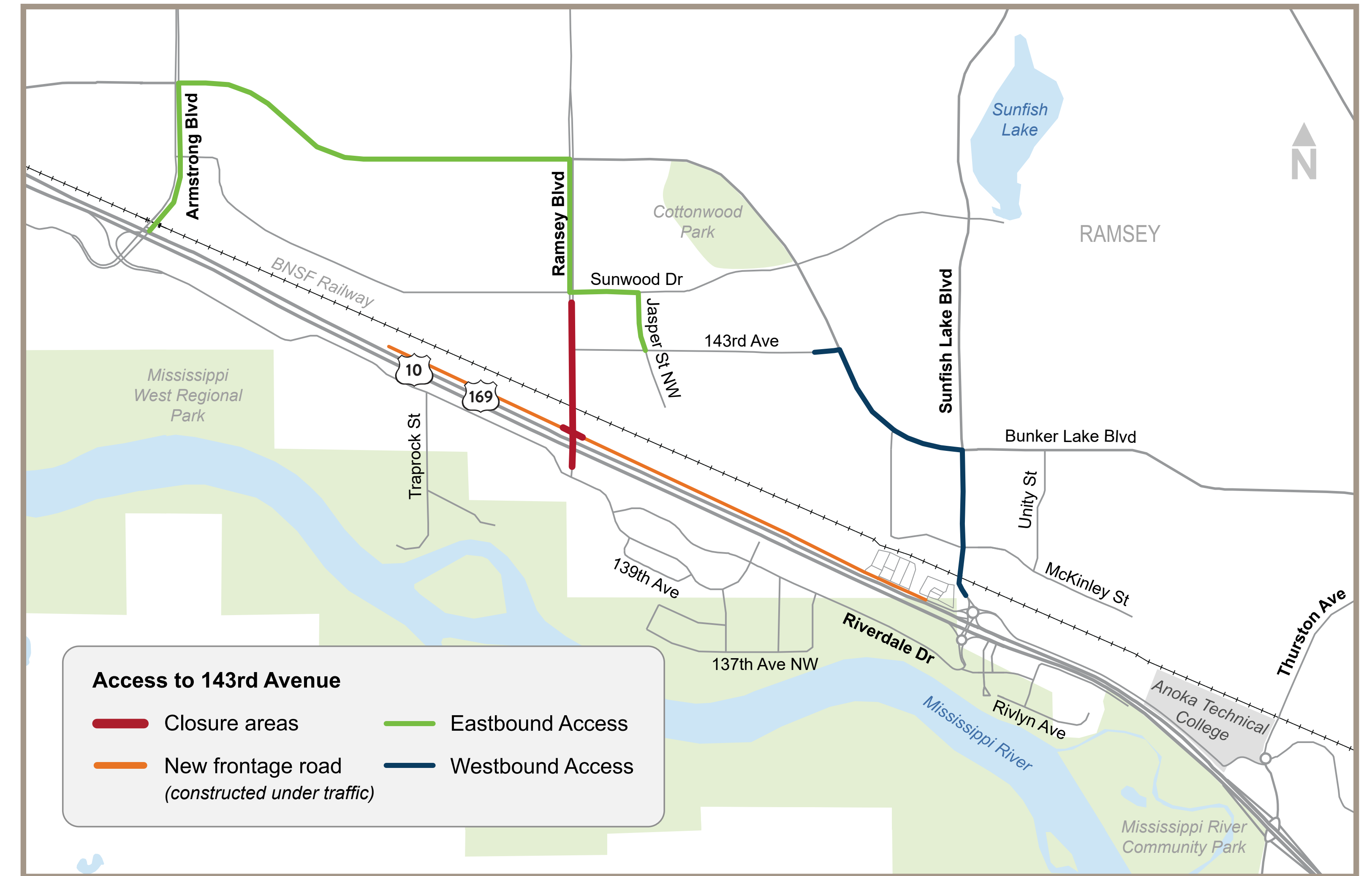


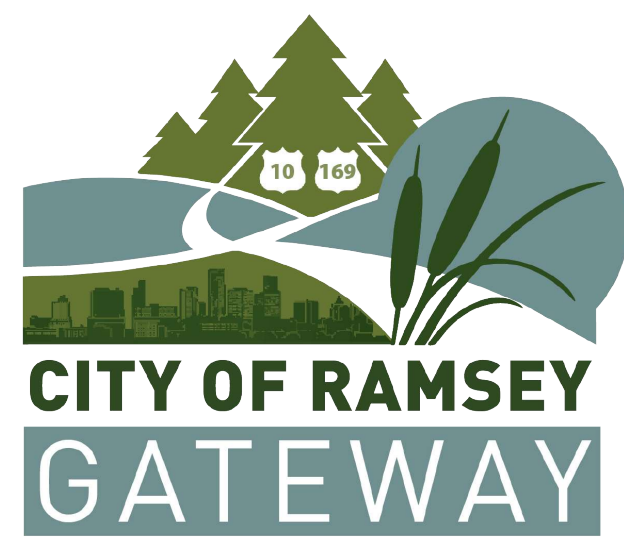
# Access Routes

## Regional Detour:



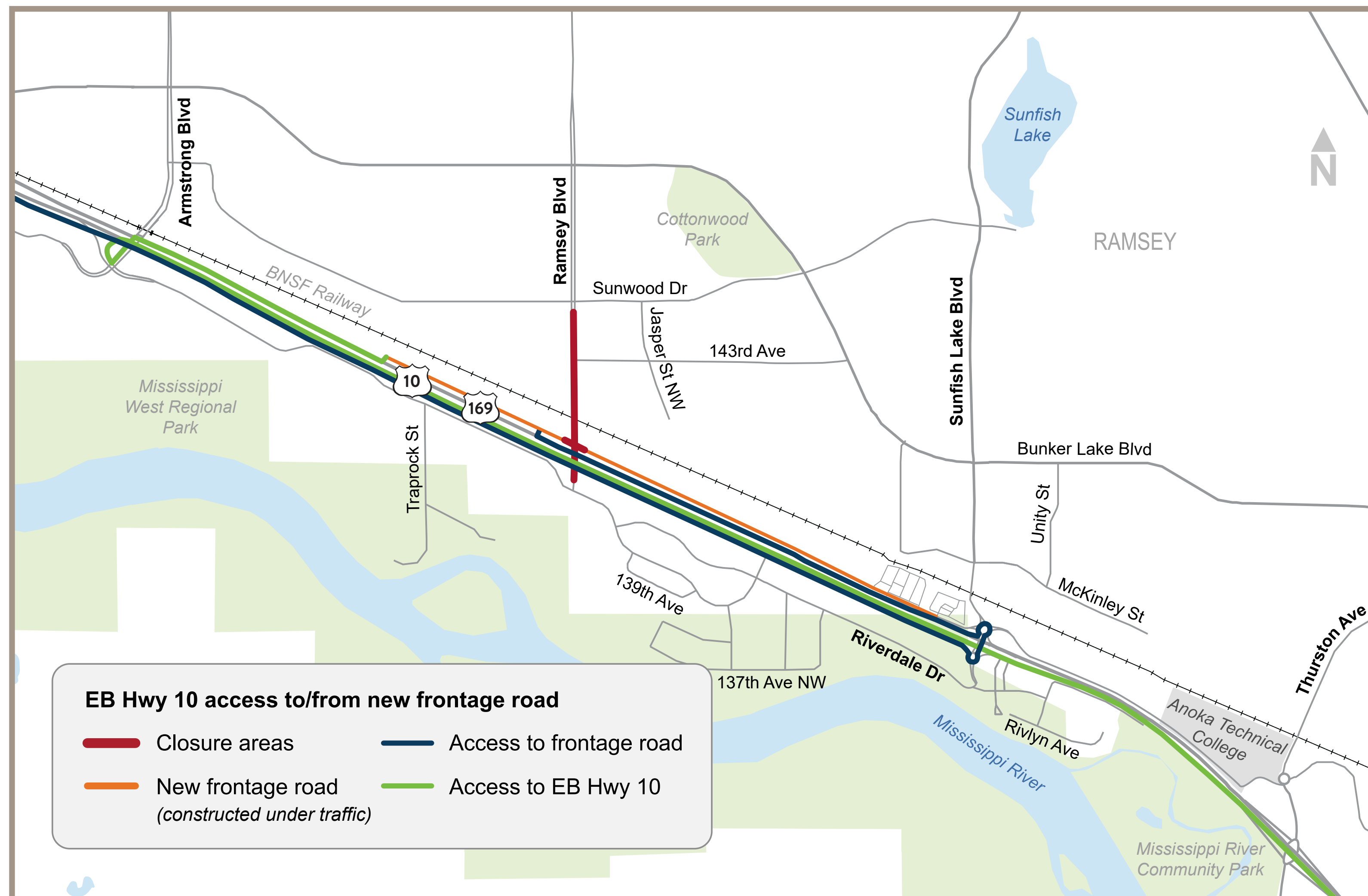
## 143rd Ave Access:





# Access Routes

## Eastbound Frontage Road Access:



## Westbound Frontage Road Access:

