

**ROUND LAKE BOULEVARD (CSAH 116) SIGNAL IMPROVEMENTS & PAVEMENT RECONDITIONING PROJECT**

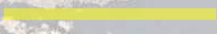
**LEGEND**



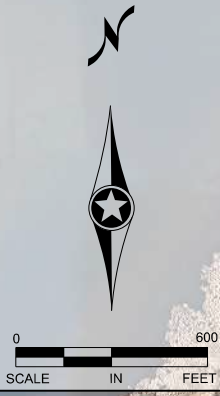
SIGNAL LOCATION



ROUND LAKE BLVD (CSAH 9)  
SIGNAL ID



MILL AND OVERLAY LIMITS



**149TH LN NW**

**143RD AVE NW**

**ROUND LAKE BLVD  
CSAH 116**

**140TH LN NW**

**138TH LN NW**

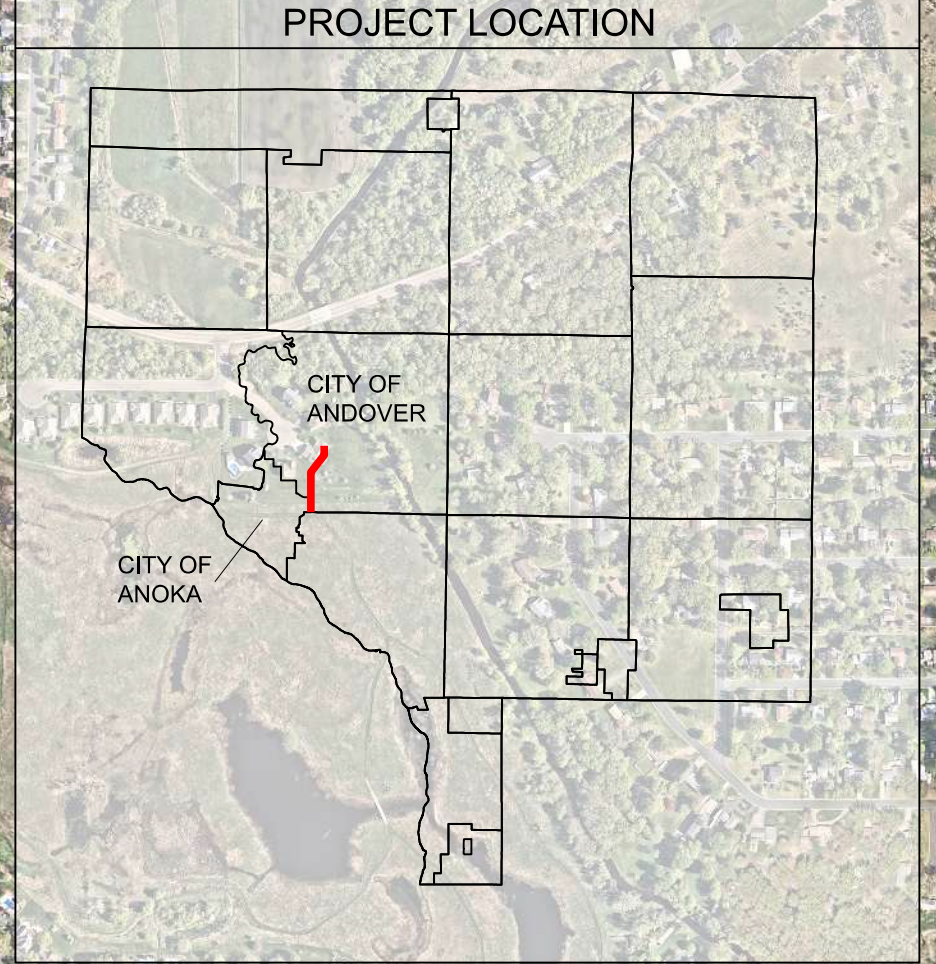
**BUNKER LAKE BLVD  
CSAH 116**

**136TH AVE NW**

**ROOSEVELT ST**

**135TH AVE NW**

**PROJECT LOCATION**



**SIGNAL SYSTEM**

**LOCATION**

- |   |                                     |
|---|-------------------------------------|
| A | ROUND LAKE BLVD AT 135TH/ROOSEVELT  |
| B | ROUND LAKE BLVD AT 136TH AVE NW     |
| C | ROUND LAKE BLVD AT BUNKER LAKE BLVD |
| D | ROUND LAKE BLVD AT 138TH LN NW      |
| E | ROUND LAKE BLVD AT 140TH LN NW      |
| F | ROUND LAKE BLVD AT 143RD AVE NW     |

**PRELIMINARY DRAFT  
SUBJECT TO CHANGE**

*Disclaimer:  
This drawing represents a potential design concept only.  
This document is a draft, subject to change, and is provided for information only.  
This draft document does not commit Anoka County to construct the project as shown in part or in whole.  
The actual project plan may differ from this draft plan.  
Contact the Anoka County Highway Department with any questions:  
763-324-3100*