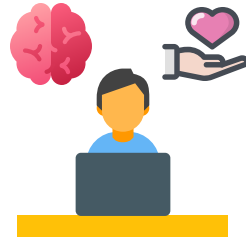


Workplaces

Mental Health & Wellbeing in the Workplace Event

Hosted by NAMI Minnesota | July 30, 2025 9 -11a.m.

Join NAMI (National Alliance on Mental Illness) Minnesota for their 3rd annual Mental Health & Wellbeing in the Workplace Event! This event will teach attendees how to better understand stress and trauma, learn stress management practices, discover how to create a safe and supportive environment for employees living with mental illness and more. The event will be in person at the McKnight Foundation in Minneapolis. There is a \$10 attendance fee. [Reserve your spot today!](#)



News, Resources, and Grants

Monthly Small Business Call

Are you a small business owner looking to network and have conversations with business experts and peers? Join the Office of Small Business and Innovation's [Monthly Small Business Call!](#) Calls are 2pm-3pm the second Tuesday of every month. Subscribe to reminders and call invites [here](#).

Upcoming MN Department of Labor and Industry Webinars

[Recent Updates to Minnesota Labor Laws](#)

Learn about newly effective labor laws in the state over the past 2 years (including earned sick and safe time) and their impact on your workplace.

July 17, 2025 2 - 3 p.m. | [Register here](#)

[Women's Economic Security Act \(WESA\)](#)

Informational webinar about WESA and its impact on workers and employees.

August 6, 2025 10 - 11:15 a.m. | [Register here](#)

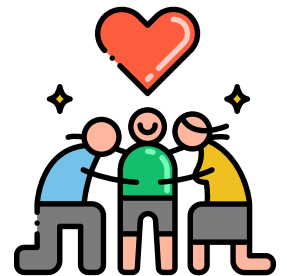
August 14, 2025 2 - 3:15 p.m. | [Register here](#)

Spotlight: Public Sector

Our thoughts are with those impacted by the shooting death of State Rep. Melissa Hortman and her husband, and the shooting of State Senator John Hoffman and his wife. Click [here](#) for Anoka County's official statement.

Please take time to connect with colleagues, support one another, and prioritize employee mental health and wellbeing during this disquieting time. Consider hosting a [healing circle](#) in your workplace to provide a safe space for reflection and community.

A list of mental health resources can be found [here](#). For additional information about mental health support and services, contact Lori Blaukat (lori.blaukat@anokacountymn.gov).



Zoey Doto, MPH, CPH
zoey.doto@anokacountymn.gov
612.759.7563



ANOKA
COUNTY



Anoka
County